

# Jefferson Ultrasound Research and Education Institute

## 2005 – 2006 Course Catalog

Institute Director  
Barry B. Goldberg, MD

Register On-Line  
<http://www.jefferson.edu/jurei>

**CME Category 1 Credits**

Sponsored by the Jefferson Ultrasound  
Research and Education Institute,  
Thomas Jefferson University Hospital  
and the Office of  
Continuing Medical Education,  
Jefferson Medical College  
Philadelphia, Pennsylvania

A World Health Organization (WHO)  
Collaborating Center for Continuing and  
General Education in Diagnostic Ultrasound



Thomas  
**Jefferson**  
University

Jefferson  
Medical  
College



Thomas  
**Jefferson**  
University  
Hospital

 Jefferson Health System®

# THE LEADING EDGE IN DIAGNOSTIC ULTRASOUND

May 23 – 26, 2006

THREE TRACKS  
EXHIBITS  
HANDS-ON

**Program Director**

Barry B. Goldberg, MD

**Co-Directors**

Oksana H. Baltarowich, MD  
Flemming Forsberg, PhD  
Alfred B. Kurtz, MD  
Levon Nazarian, MD  
Laurence Needleman, MD  
Catherine W. Piccoli, MD  
Henrietta Kotlus Rosenberg, MD

• **Women's Imaging**  
Breast, OB/Gyn 2D/3D/4D

• **Musculoskeletal Ultrasound**

• **Vascular Ultrasound**

• **Pediatric Ultrasound**  
for the General Radiologist

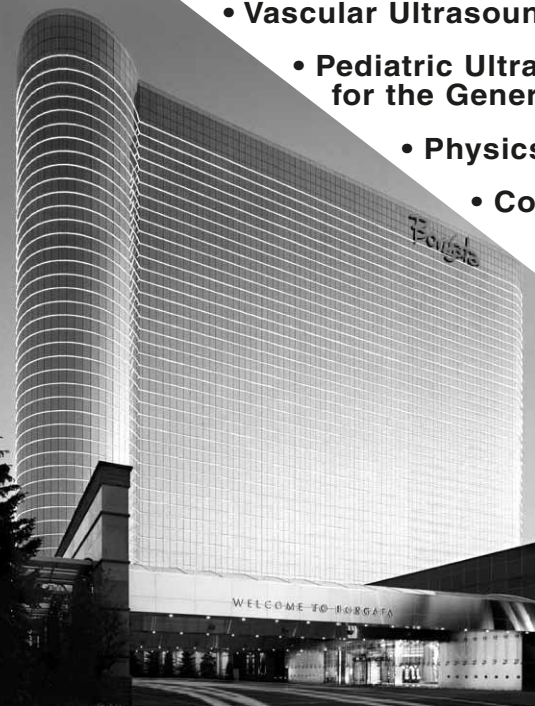
• **Physics Refresher**

• **Contrast Agents Symposium**

• **The Requisites:**  
A Comprehensive Review

save  
the  
date!

Conference Location  
Borgata Hotel, Casino & Spa  
Atlantic City, NJ



# 2005 – 2006 Year at a Glance

2005

<b>September</b>	21–24 Vascular Imaging and Doppler 27–01 Principles of Ob/Gyn Ultrasound	<b>October</b>	20–21 Vascular Interpretation 27–28 Fetal Echocardiography
<b>November</b>	4–5 Transvaginal Ultrasound 8–12 Ob/Gyn Ultrasound-Core Course 11–12 3D/4D Ob/Gyn Ultrasound	<b>December</b>	7–10 Vascular Imaging and Doppler

2006

<b>January</b>	10–14 Principles of Ob/Gyn Ultrasound 17–21 Abdominal Ultrasound 23–24 Physics 25–28 Vascular Imaging and Doppler	<b>February</b>	3–4 Breast Ultrasound 6–10 Echocardiography 17–18 Transvaginal Ultrasound 24–25 Musculoskeletal Ultrasound 27–28 Emergency/Trauma Ultrasound
<b>March</b>	3–4 Pediatric Ultrasound 7–11 Ob/ Gyn Ultrasound-Core 10–11 3D/4D Ob/ Gyn Ultrasound 16–17 Fetal Echocardiography	<b>April</b>	4–8 Principles of Ob/Gyn Ultrasound 24 Prostate Ultrasound 27–28 Echocardiography for the Sonographer
<b>May</b>	23–26 Leading Edge in Diagnostic Ultrasound (Atlantic City, New Jersey, USA)	<b>June</b>	2–3 Transvaginal Ultrasound 8–9 Vascular Interpretation 15–16 Emergency/Trauma Ultrasound
<b>July</b>	11–15 Principles of Ob/Gyn Ultrasound 18–22 Abdominal Ultrasound 26–29 Vascular Imaging and Doppler 31–4 Echocardiography	<b>August</b>	No Courses Scheduled
<b>September</b>	8–9 Musculoskeletal Ultrasound 12–16 Principles of Ob/Gyn Ultrasound 18–19 Pediatric Ultrasound	<b>October</b>	4–7 Vascular Imaging and Doppler 12–13 Fetal Echocardiography 23–24 Emergency/Trauma Ultrasound 26–27 Vascular Interpretation
<b>November</b>	3–4 Transvaginal Ultrasound 7–11 Ob/ Gyn Ultrasound-Core 10–11 3D/4D Ob/ Gyn Ultrasound 16–17 Echocardiography for the Sonographer	<b>December</b>	4–5 Physics 6–9 Vascular Imaging and Doppler

Jefferson Ultrasound Research and Education Institute  
 132 South 10th Street, Suite 780 Main Building, Philadelphia PA 19107-5244  
 215-955-8533 Toll Free: 888-390-5051 Fax: 215-923-9452  
 jurei@mail.tju.edu <http://www.jefferson.edu/jurei>

# Program Faculty

Each course features Institute faculty and guest speakers recognized for their expertise in diagnostic ultrasound.

## Institute Faculty

- Adom Anane-Firempong, BS, RDMS, RVT, RDMS  
Clinical Instructor
- Paul C. Anisman, MD  
Clinical Assistant Professor of Pediatrics
- Oksana H. Baltarowich, MD  
Associate Professor of Radiology
- George Bega, MD  
Assistant Professor of Obstetrics and Gynecology
- Rodney Bell, MD  
Professor of Neurology
- Vincent Berghella, MD  
Professor of Obstetrics and Gynecology
- Diane Bergin, MD  
Assistant Professor of Surgery and Radiology
- R. Anthony Carabasi, MD  
Professor of Surgery and Radiology
- Patrick D. Coon, RDMS, RCVT  
Clinical Instructor
- Joseph J. Darby, Jr., BS, RDMS  
Clinical Instructor
- Adam P. Dicker, MD, PhD  
Assistant Professor of Radiation Oncology
- Paul J. Di Muzio, MD  
Assistant Professor of Surgery
- John Dlugosz, BS, RDMS  
Clinical Instructor
- Rick I. Feld, MD  
Associate Professor of Radiology
- Flemming Forsberg, PhD  
Professor of Radiology
- Traci B. Fox, BS, RDMS, RVT  
Clinical Instructor
- Barry B. Goldberg, MD  
Professor of Radiology
- Ethan J. Halpern, MD, MS  
Professor of Radiology and Urology
- Alfred B. Kurtz, MD  
Professor of Radiology and Obstetrics and Gynecology
- Anna S. Lev-Toaff, MD  
Professor of Radiology
- Ji-Bin Liu, MD  
Research Associate Professor of Radiology
- Lauren Lown, BS, RDMS, RVT  
Clinical Instructor
- Roger Lown, BS, RDMS, RVT  
Clinical Instructor
- Christopher R.B. Merritt, MD  
Professor of Radiology
- Daniel A. Merton, BS, RDMS  
Clinical Instructor
- Mani Montazemi, RDMS  
Clinical Instructor
- Levon Nazarian, MD  
Professor of Radiology
- Laurence Needleman, MD  
Associate Professor of Radiology
- Patrick L. O'Kane, MD  
Clinical Assistant Professor of Radiology
- Catherine W. Piccoli, MD  
Clinical Associate Professor of Radiology
- Nandkumar Rawool, MD, RDMS  
Clinical Instructor
- Henrietta Kotlus Rosenberg, MD  
Professor of Radiology
- Sharon R. Segal, DO  
Assistant Professor of Radiology
- H. Edward Seibert, MD  
Clinical Instructor
- George William Shepherd, PhD, RDMS, RVT  
Clinical Instructor
- Terri Tuckman, MD  
Clinical Assistant Professor of Radiology
- Larry D. Waldroup, BS, RDMS  
Clinical Instructor, Institute Manager
- Stuart Weiner, MD  
Associate Professor of Obstetrics and Gynecology
- Michelle Waters, BS, RDMS  
Clinical Instructor
- Alexander J. Welch, RDMS, RVT  
Clinical Instructor
- Annina Wilkes, MD  
Clinical Assistant Professor of Radiology
- Dennis Wood, RDMS, RCPT  
Clinical Instructor
- Donna R. Zwas, MD  
Clinical Assistant Professor of Cardiology

# Program Information

## ► Accreditation

Jefferson Medical College of Thomas Jefferson University is accredited by the ACCME to provide continuing medical education for physicians.

Jefferson Medical College designates this education activity for a maximum of (\*) Category 1 credits towards the AMA Physician's Recognition Award. Each physician should claim only those credits that he/she actually spent in the activity.

\*See individual course descriptions for credit hours.

All faculty participating in continuing medical education activities sponsored by Jefferson Medical College are expected to disclose to the program audience any real or apparent conflict(s) of interest related to the content of their presentations(s). Full disclosure of faculty relationships will be made at the activity.

Sonographers may submit copies of course certificates to the ARDMS as evidence of Continuing Medical Education.

## ► Tuition

Tuition for each course is indicated after the course summary in the program description section. Tuition should be paid in full prior to the program start date.

Should you need to cancel your registration, written notification must be received ten (10) business days prior to the first day of the course. After that time, refunds are not possible but payments less the \$100 administrative fee may be applied toward courses offered within one calendar year.

In the event that a program is rescheduled or canceled by the Institute, pre-paid registrants will be given the choice of transferring to another program or receiving a full tuition refund. The Jefferson Ultrasound Research and Education Institute will not be responsible for any travel and/or lodging reimbursements. This catalog supercedes and replaces all previous catalogs and/or announcements concerning course schedules and prices and is effective for September 2005 – December 2006.

The course tuition includes course handouts, Continental Breakfast and coffee breaks.

## ► Accommodations

Reduced rates for course participants are available at conveniently located hotels in the vicinity of Thomas Jefferson University Hospital. Most are within easy walking distance, and equally convenient to the historical district and other attractions in Center City Philadelphia. Information about area hotel accommodations is provided upon receipt of course registration.

For additional information, please return the form on the last page of this catalog or contact the Institute education office.

## ► Special Accommodations

To request reasonable accommodations for a disability, please notify the Education Coordinator at Thomas Jefferson University, in writing, at least two weeks prior to the conference.

## ► Contact Us

**Phone 215-955-8533 or  
Toll Free 888-390-5051 (USA)  
Fax 215-923-9452  
E-Mail [JUREI@mail.tju.edu](mailto:JUREI@mail.tju.edu)  
[www.jefferson.edu/jurei](http://www.jefferson.edu/jurei)**

# Course Listings

## Principles of Ob/Gyn Ultrasound

Program Director: Oksana H. Baltarowich, MD

- Dates:** September 27 – October 1, 2005  
January 10 – 14, 2006                      April 4 – 8, 2006  
July 11 – 15, 2006                          September 12 – 16, 2006
- Who:** Physicians and sonographers with ultrasound experience but minimal or no prior experience performing Ob/Gyn sonography.
- What:** A comprehensive introduction to the key topics in Ob/Gyn Ultrasound. Optional hands-on scanning sessions are available. This is also an excellent first course for the midwife or other health professionals who intend to perform Ob/Gyn Ultrasound.
- Length:** 4 days classroom                      CME hours: 28
- Tuition:** \$895                                      Optional Saturday Hands-On Sessions: \$300

## Ob/Gyn Ultrasound – Core Course

Program Directors: Oksana H. Baltarowich, MD, Alfred B. Kurtz, MD

- Dates:** November 8 – 12, 2005  
March 7 – 11, 2006                      November 7 – 11, 2006
- Who:** Physicians and sonographers practicing Ob/Gyn sonography who would benefit from a comprehensive refresher and update.
- What:** In-depth coverage of ultrasound applications in obstetrics and gynecology. Approximately three quarters of the program is devoted to obstetrics and the remainder to gynecology. The Friday sessions include an overview and demonstration of 3D/4D in Ob/Gyn
- Length:** 4 days classroom                      CME hours: 28.5
- Tuition:** \$895                                      Optional Saturday Hands-On Sessions: \$300

## 3D/4D Ultrasound in Ob/Gyn

Program Directors: Oksana H. Baltarowich, MD, George Bega, MD, Anna Lev-Toaff, MD

- Dates:** November 11 – 12, 2005  
March 10 – 11, 2006                      November 10 – 11, 2006
- Who:** Physicians and sonographers who are practicing Ob/Gyn ultrasound and wish to add or expand 3D/4D capability in their practice.
- What:** This course will explore current and developing applications of 3D/4D imaging and color Doppler techniques in obstetrics and gynecology.
- Length:** 1 day classroom                      CME hours: 8.5
- Tuition:** \$450                                      Optional Saturday Hands-On Sessions: \$300



# Course Listings

## Transvaginal Ultrasound

Program Director: Anna Lev-Toaff, MD

- Dates:** November 4 – 5, 2005      February 17 – 18, 2006  
June 2 – 3, 2006      November 3 – 4, 2006
- Who:** Physicians and sonographers performing Ob/Gyn ultrasound who wish to refresh or extend their knowledge of transvaginal ultrasound applications.
- What:** Comprehensive overview of Ob/Gyn transvaginal ultrasound. Topics include basics, Gyn applications, sonohysterography, 3D, Doppler, Ob applications, interventional and screening.
- Length:** 1 day classroom      CME hours: 9.5
- Tuition:** \$350      Optional Saturday Hands-On Sessions: \$300

## Fetal Echocardiography

Program Directors: Paul C. Anisman, MD, Annina N. Wilkes, MD, Dennis Wood, RDMS, RCPT

- Dates:** October 27 – 28, 2005  
March 16 – 17, 2006      October 12 – 13, 2006
- Who:** Physicians and sonographers who wish to learn or refresh their knowledge of fetal echocardiography
- What:** Includes the use of pulsed, continuous wave, and color Doppler as well as M-mode in fetal cardiovascular diagnosis. Findings from the ultrasound imaging and Doppler assessment of fetal cardiovascular physiology will be related to the pre- and postnatal management of congenital heart disease.
- Length:** 2 days classroom      CME hours: 13.5
- Tuition:** \$475

## Breast Ultrasound

Program Director: Catherine W. Piccoli, MD

- Dates:** February 3 – 4, 2006
- Who:** Physicians and sonographers wishing to learn breast ultrasound.
- What:** Anatomy, physiology, and common pathologic conditions of the breast. Clinical breast evaluation will be discussed as an introduction to sonographic evaluation. Ultrasound-guided interventional procedures and examination of silicone gel breast implants will also be covered. An optional practical hands-on experience with live models, biopsy phantoms, and a variety of instruments is available.
- Length:** 1 day classroom      CME hours: 8
- Tuition:** \$425      Optional Saturday Hands-On Sessions: \$200

# Course Listings

## Abdominal Ultrasound

Program Director: Oksana H. Baltarowich, MD

**Dates:** January 17 – 21, 2006      July 18 – 22, 2006

**Who:** Physicians and sonographers seeking to learn or refresh their knowledge of abdominal ultrasound.

**What:** The four-day Abdominal program covers the broad range of applications for ultrasound evaluation of the abdomen. Typical course topic areas include liver, biliary system, kidneys and retroperitoneum, pancreas, spleen, great vessels, scrotum, urinary bladder, thyroid and parathyroid.

**Length:** 4 days classroom      CME hours 27.75

**Tuition:** \$895      Optional Saturday Hands-On Sessions: \$300

## Echocardiography for the Sonographer

Program Directors: Donna R. Zwas, MD, Patrick D. Coon, RDCS, RCVT

**Dates:** April 27 – 28, 2006      November 16 – 17, 2006

**Who:** Sonographers and cardiac technologists wishing to learn basic echocardiography.

**What:** Covers all the basics including physical principles, cardiac anatomy, exam technique, cardiac measurements, common pathologies and anomalies. Case presentation and review enhance the learning experience. Practicum scanning sessions are included in the tuition.

**Length:** 2 days classroom      CME hours: 15

**Tuition:** Tuition: \$950

## Echocardiography – Core Course

Program Director: Donna R. Zwas, MD

**Dates:** February 6 – 10, 2006      July 31 – August 4, 2006

**Who:** Individuals seeking a more comprehensive basic echo program.

**What:** Physical principles, cardiac anatomy, technique, M-mode, 2-D, Doppler, TEE, common pathologies and findings.

**Length:** 5 days classroom      CME hours: 31

**Tuition:** \$1,250      Optional Hands-On Sessions: \$300



# Course Listings

## Vascular Imaging and Doppler

Program Director: Laurence Needleman, MD

- Dates:** September 21 – 24, 2005      December 7 – 10, 2005  
January 25 – 28, 2006      July 26 – 29, 2006  
October 4 – 7, 2006      December 6– 9, 2006
- Who:** Physicians and sonographers seeking a comprehensive basic course in vascular ultrasound.
- What:** Covers physical principles, 2D imaging, spectral Doppler, color Doppler in cerebrovascular, peripheral and visceral applications.
- Length:** 3 days classroom      CME hours: 20.5
- Tuition:** \$895      Optional Saturday Hands-On Session: \$200

## Vascular Interpretation

Program Director: Laurence Needleman, MD

- Dates:** October 20 – 21, 2005  
June 8 – 9, 2006      October 26 – 27, 2006
- Who:** Physicians, sonographers and vascular technologists who are practicing vascular ultrasound and wish to expand their ability to assess the significance of the imaging/Doppler findings.
- What:** The course will also include some of the more unusual findings in vascular disease. Informal question and answer sessions will be incorporated throughout the program to facilitate a high level of interaction between participants and faculty.
- Length:** 1.5 day classroom      CME hours: 15
- Tuition:** \$850

## Musculoskeletal Ultrasound

Program Director: Levon Nazarian, MD

- Dates:** February 24 – 25, 2006      September 8 – 9, 2006
- Who:** Physicians and sonographers who currently perform ultrasound imaging and wish to extend their capabilities to incorporate musculoskeletal ultrasound imaging.
- What:** The course provides participants with a comprehensive introduction to musculoskeletal ultrasound. Anatomic areas covered in this course include: shoulder, hand, wrist, foot, ankle, knee, general application of diagnostic ultrasound in sports medicine, and ultrasound guided interventions in the musculoskeletal system.
- Length:** 2 days classroom      CME hours: 13
- Tuition:** \$525      Optional Saturday Hands-On Session: \$200

## Prostate Ultrasound

Program Director: Ethan J. Halpern, MD, MS

- Dates:** April 24, 2006
- Who:** The course is designed for urologists, radiologists, radiation oncologists and sonographers.
- What:** This program provides an overview of established and recently developed approaches to ultrasound of the prostate with a special emphasis on endorectal scanning.
- Length:** 1 day classroom      CME hours: 9.5
- Tuition:** \$650      Optional Hands-On Session: \$300

# Course Listings

## Physics and Instrumentation

Program Directors: Frederick Kremkau, PhD and M. Nathan Pinkney, BS, RDMS

**Dates:** January 23 – 24, 2006      December 4 – 5, 2006

**Who:** Individuals learning ultrasound for the first time and those using ultrasound who have not completed a formal course in ultrasound physics.

**What:** A highly condensed but comprehensive introduction to ultrasound physics and instrumentation. No prior knowledge of ultrasound physics is assumed.

**Length:** 2 days classroom      CME Hours: 15

**Tuition:** \$525

## Emergency/Trauma Ultrasound

Program Directors: H. Edward Seibert, MD and Traci B. Fox, BS, RDMS, RVT

**Dates:** February 27 – 28, 2006      June 15 – 16, 2006

October 23 – 24, 2006

**Who:** Physicians and sonographers working in the emergency room setting.

**What:** Covers the FAST protocol, screening for AAA, gallstones, ectopic pregnancy, DVT and other procedures useful in the emergency/trauma setting.

**Length:** 2 days classroom      CME Hours: 15

**Tuition:** \$950      Optional Evening Hands-On Sessions: \$300

## Pediatric Ultrasound

Program Director: Henrietta Kotlus Rosenberg, MD

**Dates:** March 3 – 4, 2006      September 18 – 19, 2006

**Who:** This course is designed for the generalist radiologist or sonographer who is required to perform or interpret pediatric ultrasound studies.

**What:** The course covers the broad spectrum of ultrasound applications in the pediatric population. Topics include abdominal evaluation, the acute abdomen, neonatal brain, GI/GU sonography and pediatric hip evaluation.

**Length:** 2 days classroom      CME hours: 15

**Tuition:** \$525





# PHILADELPHIA

## A FIVE-STAR CITY

**Philadelphia is the place where big-city excitement meets hometown charm.**

Made famous as the birthplace of "life, liberty and the pursuit of happiness," Philadelphia offers much more than cobblestone streets and historic landmarks. The city and region offer an abundance of cultural, culinary, artistic and ethnic experiences.



**To search the city's treasures, visit:**

**[www.pcvb.org/treasures](http://www.pcvb.org/treasures)**

# Visiting Fellowship Program

If you are a physician or sonographer who wishes to participate in a more flexible, self-directed learning experience, you will have access to the full range of educational resources of the Institute through the Visiting Fellowship Program.

## Program Description

The Department of Radiology at Thomas Jefferson University Hospital offers visiting fellowships in seven major sub-specialty areas of Radiology:

- Breast Imaging
- Computed Body Tomography
- Echocardiography
- Magnetic Resonance Imaging
- Musculoskeletal
- Neuroradiology/ENT
- Ultrasound

Each of these programs is designed to provide a flexible and individualized learning experience. Visiting fellows have the opportunity to participate in film interpretation, observe procedures and techniques, study teaching file cases, as well as attend regularly scheduled case reviews and interdisciplinary conferences. However, it is the one-one-one interaction with faculty that makes these programs rewarding for both the visiting fellow and the faculty. In each program the basic curriculum can be modified to place emphasis on specific areas in which the visiting fellow has an interest.

As an **Academic** Visiting Fellow you may attend all regularly scheduled courses and have access to all of our educational resources including textbook, videotape and teaching case file libraries, as well as CD ROMs and DVDs. Academic Visiting Fellowships are available only for Diagnostic Ultrasound.

As a **Clinical** Visiting Fellow, you will also have the opportunity to participate in the daily functioning of the facility by attending reading sessions and observing procedures being performed. Visiting Clinical Fellowships are offered in all seven major sub-specialty areas of Radiology: Breast Imaging, Computed Tomography, Ultrasound, Magnetic Resonance Imaging, Musculoskeletal MRI, Neuroradiology/ENT, and Echocardiography.

Visiting Fellowships are available for periods ranging from one day to one year. Application for a Visiting Fellowship should be accompanied by an outline of learning objectives for the Visiting Fellowship period, a curriculum vitae, and a \$100 deposit (non-refundable). Physicians visiting from outside the United States must also submit verification of professional status. If you are not a resident of the United States and will require assistance with visa arrangements, please apply a minimum of six months in advance of the desired dates of fellowship.

Tuition for a Visiting Clinical Fellowship is \$1,200 per week. The Academic Visiting Fellowship in Ultrasound is \$600 per week. Substantial reductions in rate are available for more extended periods. Reduced rates are also available for physicians from developing countries. To obtain current pricing for physicians from developing countries, please e-mail your request to [jurei@mail.tju.edu](mailto:jurei@mail.tju.edu) or visit our web site at <http://www.jefferson.edu/jurei> where you can submit an inquiry on-line.

Enrollment in the Visiting Fellowship program is limited and application in advance of the desired fellowship period is required. Jefferson Medical College designates this activity for up to 150 hours in Category 1 credit toward the AMA Physician's Recognition Award.

**If you wish to obtain further information please contact the Institute's Education Office:  
(toll free) 888-390-5051 (USA only), fax: 215-923-9452  
e-mail: [jurei@mail.tju.edu](mailto:jurei@mail.tju.edu), web site: <http://www.jefferson.edu/jurei>**



## The Video Classroom

Do you need CME credits but don't have the time to travel? Although nothing can compare with the experience of attending a live course, many of the outstanding courses at Jefferson are recorded and are available to you as a "Video Classroom" course on DVD/videotape. Selected courses are CME approved and allow two individuals to obtain AMA Category 1 CME credits. Additional CME applications can be purchased as needed.

### DVD/Video Courses with AMA Category 1 CME Credits

Ob/Gyn Ultrasound Series	32 hours CME	\$1500
Noninvasive Vascular Ultrasound Series	26.5 hours CME	\$1400
Musculoskeletal Ultrasound Series	12.5 hours CME	\$995
Breast Ultrasound Series	12 hours CME	\$750
Abdominal Ultrasound Series	23.5 hours CME	\$950

### Special Physics Course on DVD or Videotape

Physics and Instrumentation for Diagnostic Ultrasound:

A Comprehensive Overview by best selling author Frederick W. Kremkau, PhD  
6.5 hours CME                      \$395

### Non-CME Courses on DVD or Videotape

Echocardiographic Imaging	\$1450
Prostate Ultrasound	\$750
Fetal Echocardiography	\$995
Transvaginal Ultrasound	\$625

If you have special needs for video or DVD learning materials, call us with the specifics. For more information on the courses from which the Video Classroom tapes/DVDs are recorded, visit our website at [www.jefferson.edu/jurei](http://www.jefferson.edu/jurei)

### Special Benefit for JUREI Course Attendees Video Notes: Take Home Your Course Experience!

Hate trying to listen and take notes at the same time? Did you miss something important in a key lecture? The solution is the newest feature of our live courses. Every lecture and demonstration is recorded live and offered exclusively to course participants as inexpensive "Video Notes" on videotape or on DVD. These have become a popular complement to our live courses at Jefferson.

# Registration Information

## ► Registration

Tuition should be paid in full at the time of registration. Tuition, less the administrative fee of \$100, is refundable if written notification is received 10 business days prior to the course. After that time refunds are not possible, but your payment less the administrative fee may be credited to a future course for use within one calendar year. Payment may be made by check, traveler's checks or credit card (American Express, MasterCard or VISA). Foreign payments must be made by a draft on a United States bank. Make checks payable to "Ultrasound Institute-TJU"

## ► Video/DVD Purchases

The registration form on the next page also serves as the order form for purchase of video tapes or DVDs. Payment may be made by check or credit card (American Express, MasterCard or VISA). Foreign payments must be made by a draft on a United States bank. Payment is required with order. No refunds are permitted. Make checks payable to "Ultrasound Institute-TJU"

## ► Questions?

Contact us at 215-955-8533 or  
Toll Free 888-390-5051 (USA) or  
Fax 215-923-9452  
jurai@mail.tju.edu

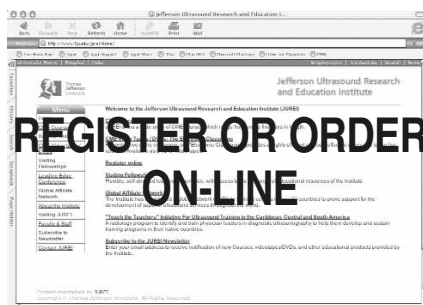
The registration form may be photocopied for multiple registrations.

## ► Mail To

Jefferson Ultrasound Research  
and Education Institute  
Thomas Jefferson University Hospital  
132 South 10th Street  
Suite 780 Main Building  
Philadelphia, PA 19107-5244

## ► Fax To

215-923-9452



You may register for our courses or purchase videotapes or DVDs online at <http://www.jefferson.edu/jurei>.

The Jefferson CME office now provides on-line access to CME certificates earned after July 1, 2003. To access this service, registrants must provide us with the last 4 digits of their Social Security number on the registration form. For those who do not have a Social Security number, provide any 4 digits that you can easily remember. The web address for accessing CME certificates is <http://jeffline.jefferson.edu/jeffcme>

When registering for a course  
with optional hands-on sessions, be  
sure to list the hands-on sessions  
on the registration form.





Jefferson Ultrasound Research and Education Institute  
132 South 10th Street  
Suite 780 Main Building  
Philadelphia, PA 19107-5244

# Jefferson Ultrasound Research and Education Institute

## 2005 – 2006 Course Catalog

Non-Profit Org  
U.S. Postage  
**PAID**  
Bensalem, PA  
Permit No. 224