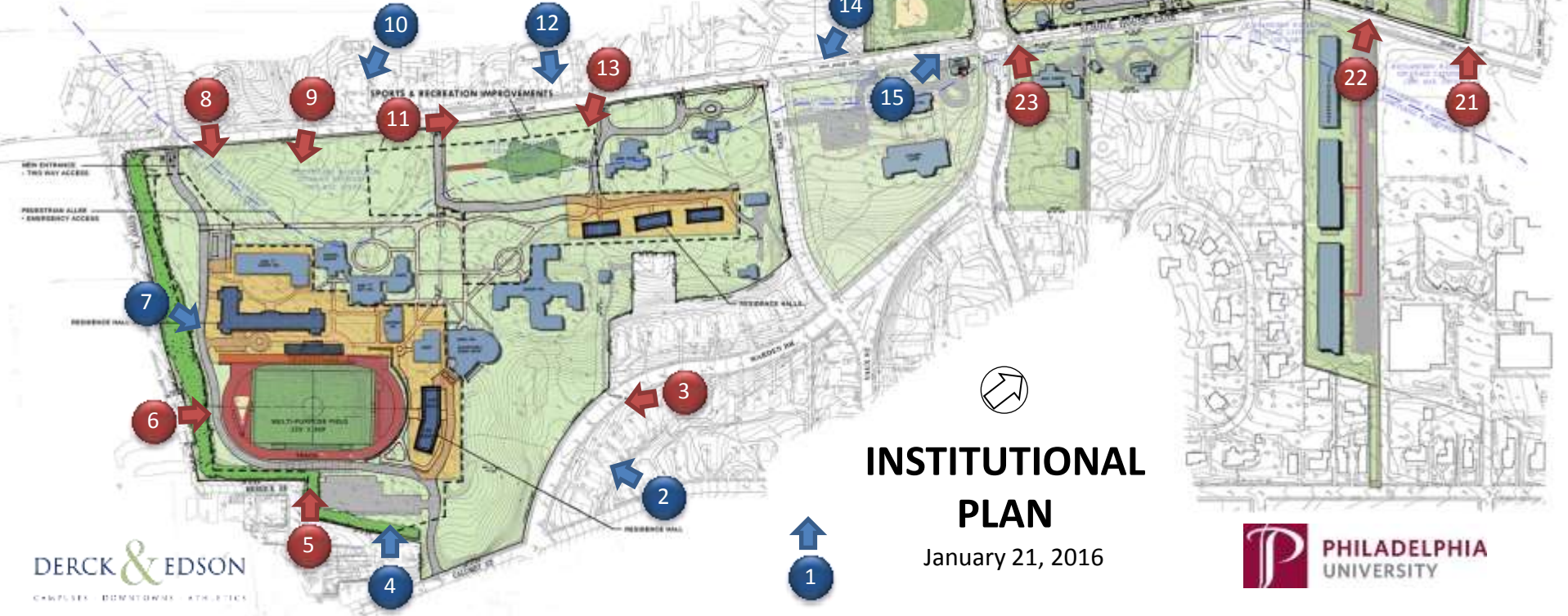


LEGEND

**CLICK NUMBERED VIEWS FOR LINK TO PERSPECTIVE RENDERINGS

- EXISTING BUILDINGS
- APPROXIMATE BUILDING FOOTPRINT COVERAGE
- PROPOSED SITE IMPROVEMENT ZONES (INCLUDES WALLS, FENCES, AND ATHLETIC FIELDS)
- PROPOSED BUILDING ZONES
- TREE BUFFER
- LOADING ZONE
- AERIAL VIEWS
- GROUND LEVEL VIEWS

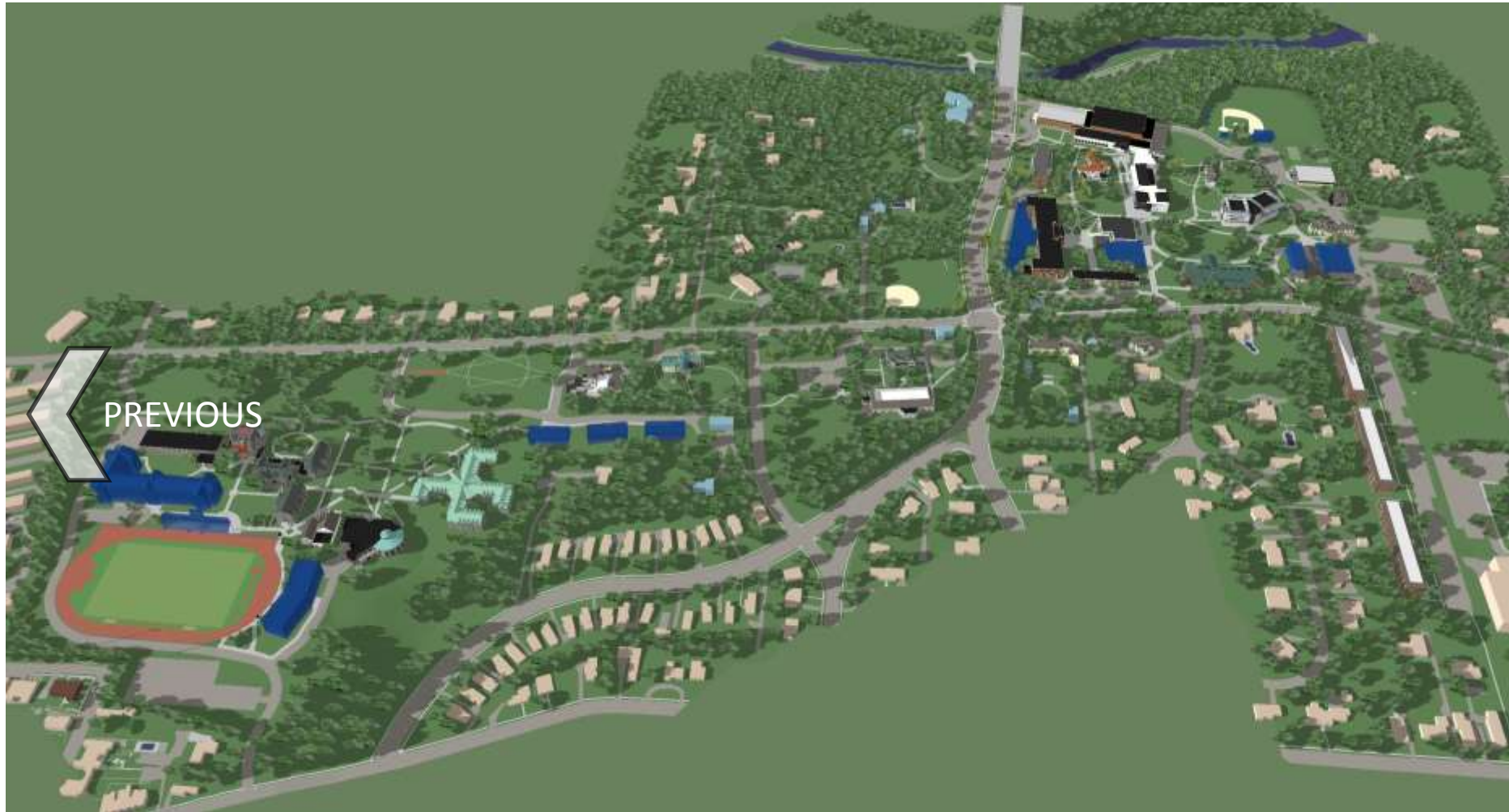


INSTITUTIONAL PLAN

January 21, 2016



*CLICK MAP BUTTON AT TOP TO RETURN TO MAP



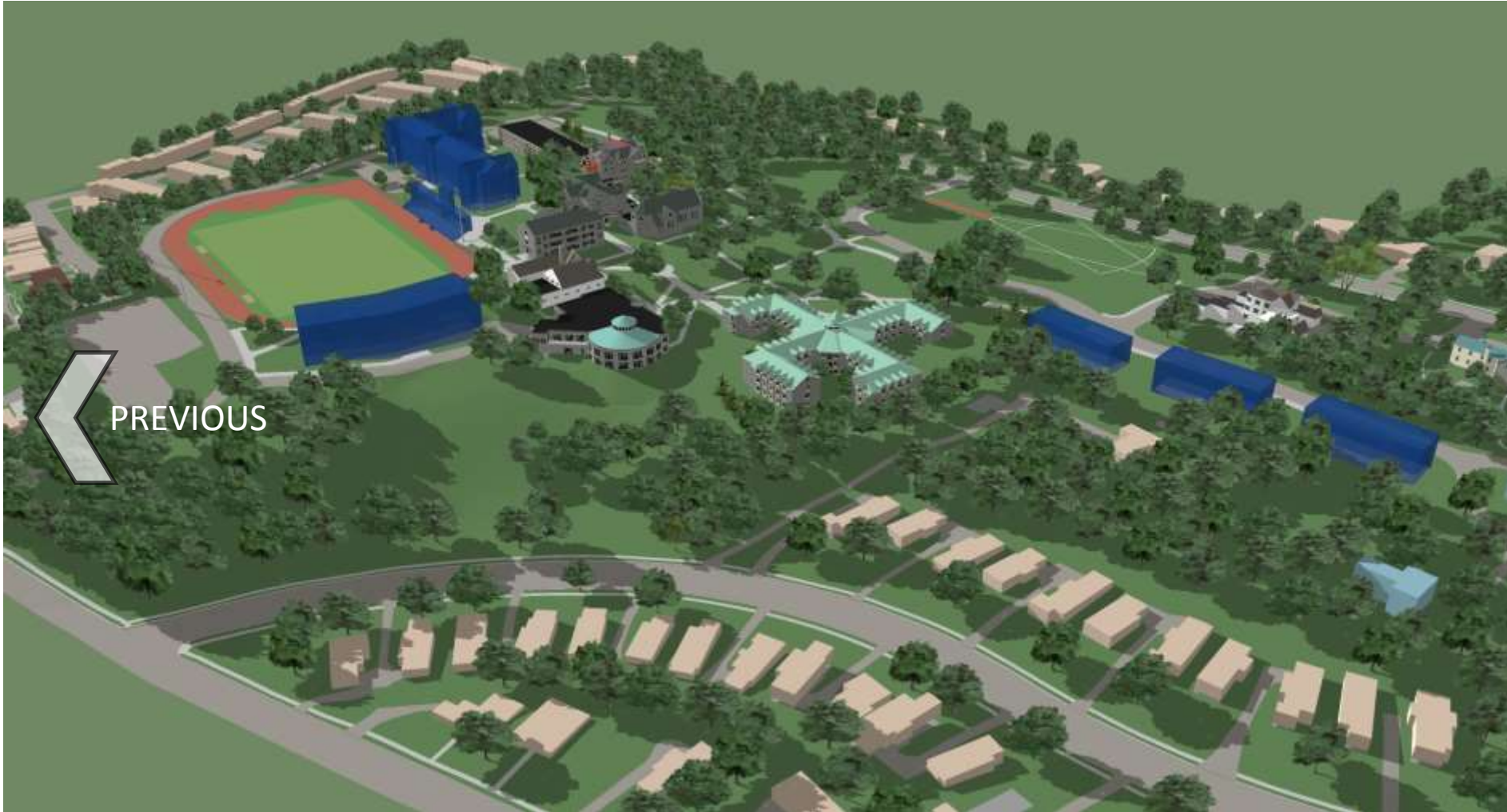
*CLICK MAP BUTTON AT TOP TO RETURN TO MAP



PROPOSED
AERIAL



*CLICK MAP BUTTON AT TOP TO RETURN TO MAP



*CLICK MAP BUTTON AT TOP TO RETURN TO MAP



*CLICK MAP BUTTON AT TOP TO RETURN TO MAP

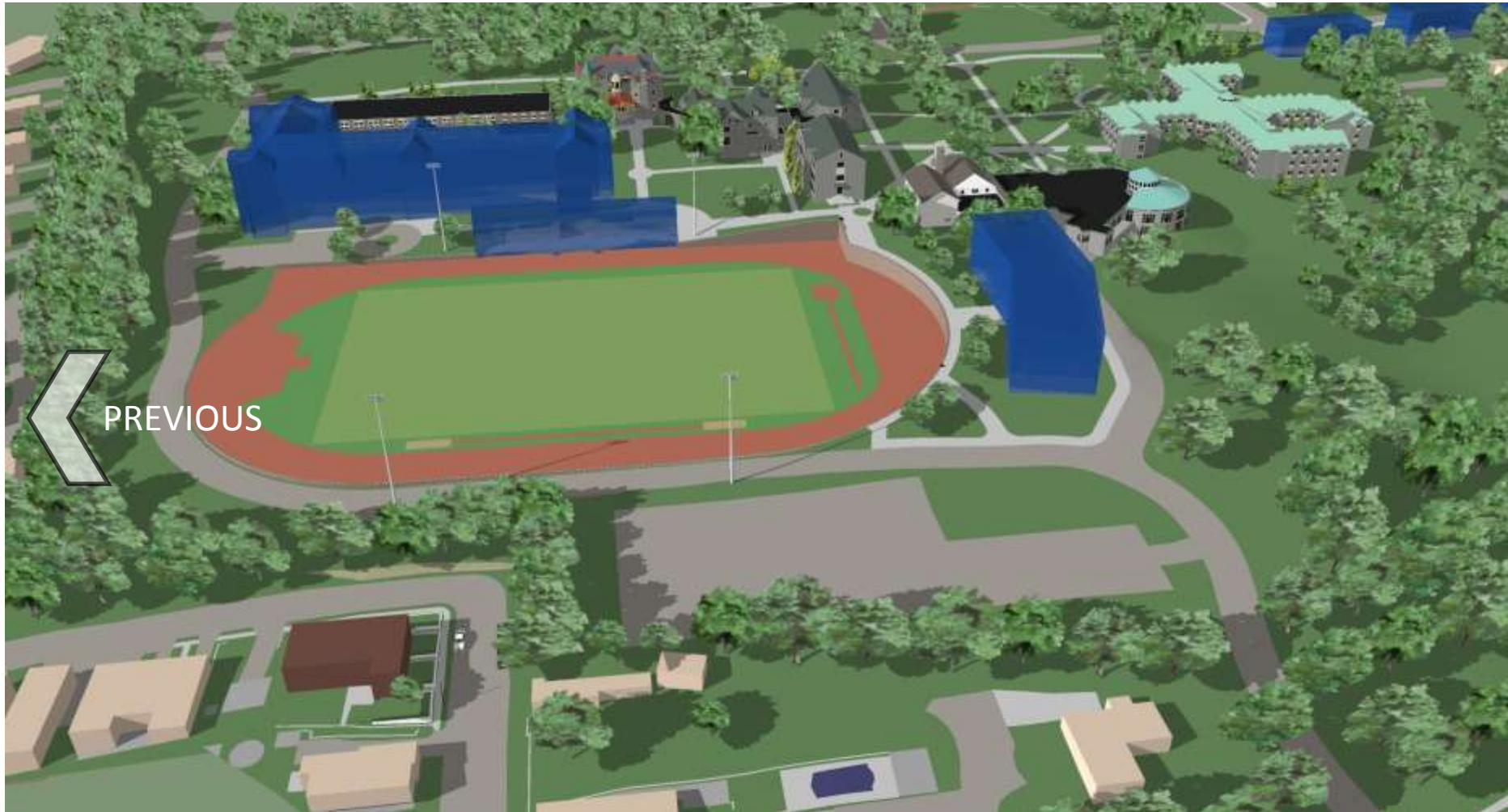
A large, light gray arrow pointing to the left, with the text "STREETVIEW PHOTO" written in white, sans-serif capital letters to its right.

STREETVIEW
PHOTO

*CLICK MAP BUTTON AT TOP TO RETURN TO MAP



*CLICK MAP BUTTON AT TOP TO RETURN TO MAP



*CLICK MAP BUTTON AT TOP TO RETURN TO MAP



*CLICK MAP BUTTON AT TOP TO RETURN TO MAP



*CLICK MAP BUTTON AT TOP TO RETURN TO MAP



*CLICK MAP BUTTON AT TOP TO RETURN TO MAP

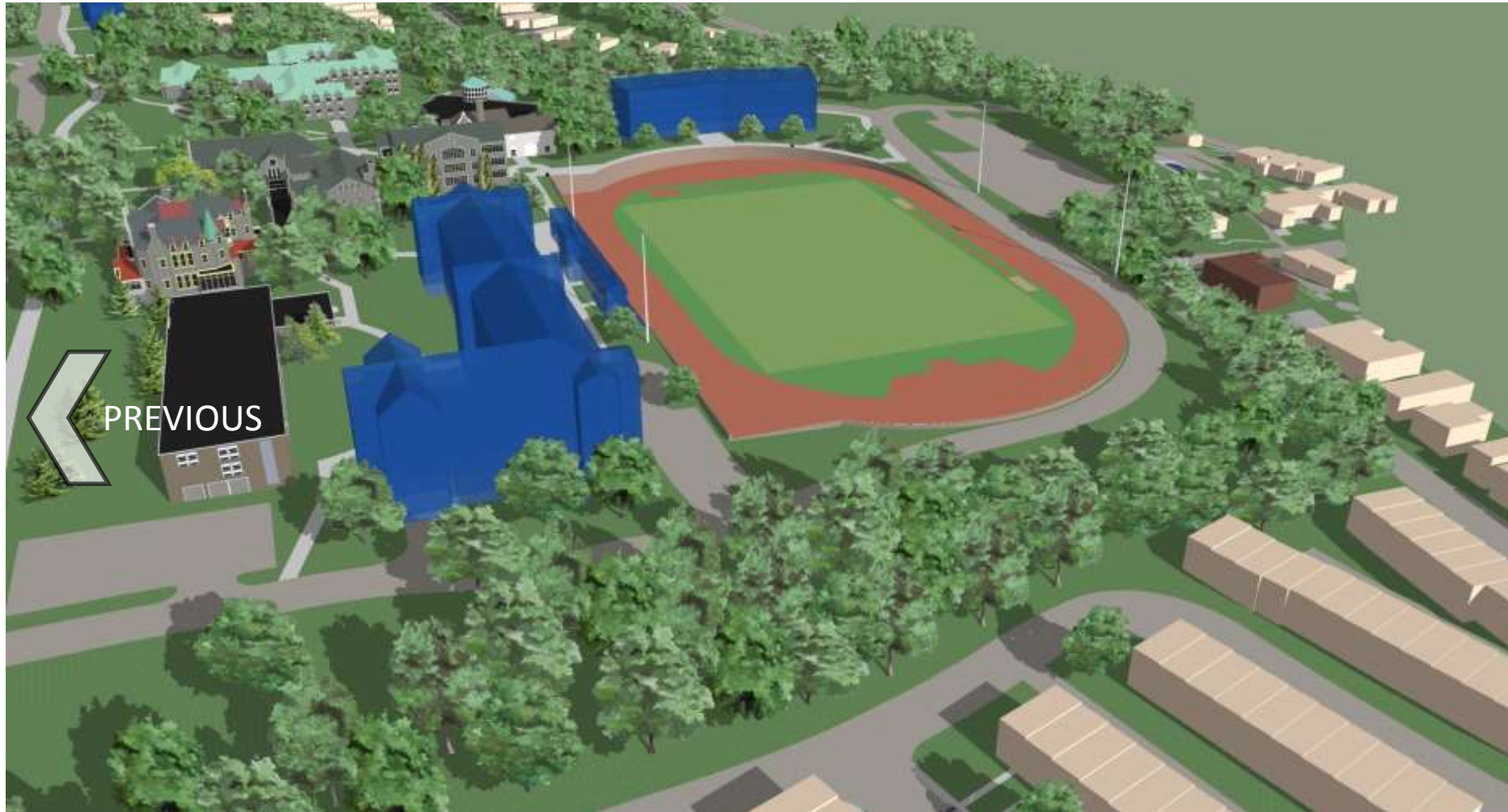


STREETVIEW
PHOTO

*CLICK MAP BUTTON AT TOP TO RETURN TO MAP



*CLICK MAP BUTTON AT TOP TO RETURN TO MAP



*CLICK MAP BUTTON AT TOP TO RETURN TO MAP



*CLICK MAP BUTTON AT TOP TO RETURN TO MAP



STREETVIEW
PHOTO

*CLICK MAP BUTTON AT TOP TO RETURN TO MAP



*CLICK MAP BUTTON AT TOP TO RETURN TO MAP

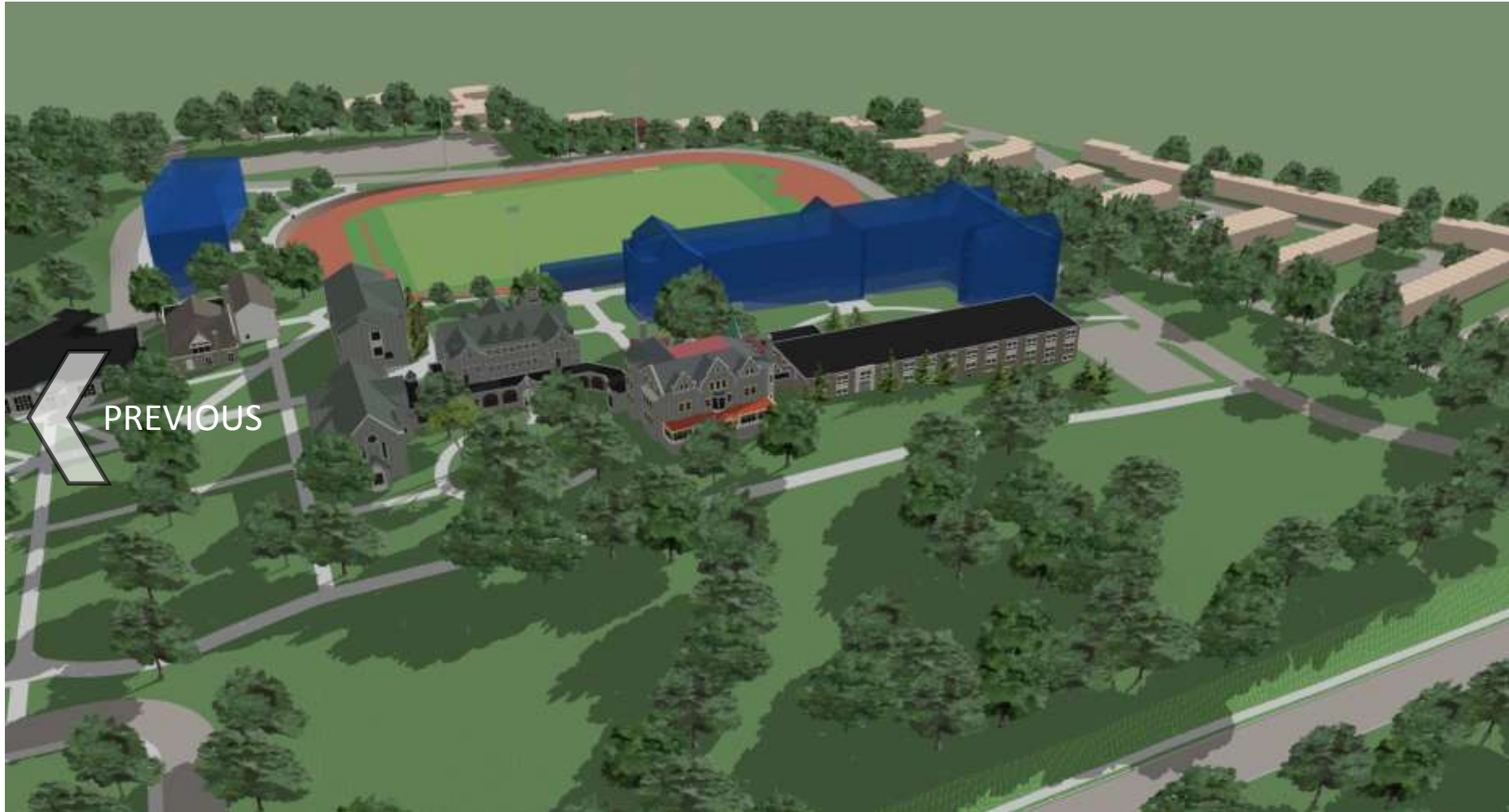


STREETVIEW
PHOTO

*CLICK MAP BUTTON AT TOP TO RETURN TO MAP



*CLICK MAP BUTTON AT TOP TO RETURN TO MAP



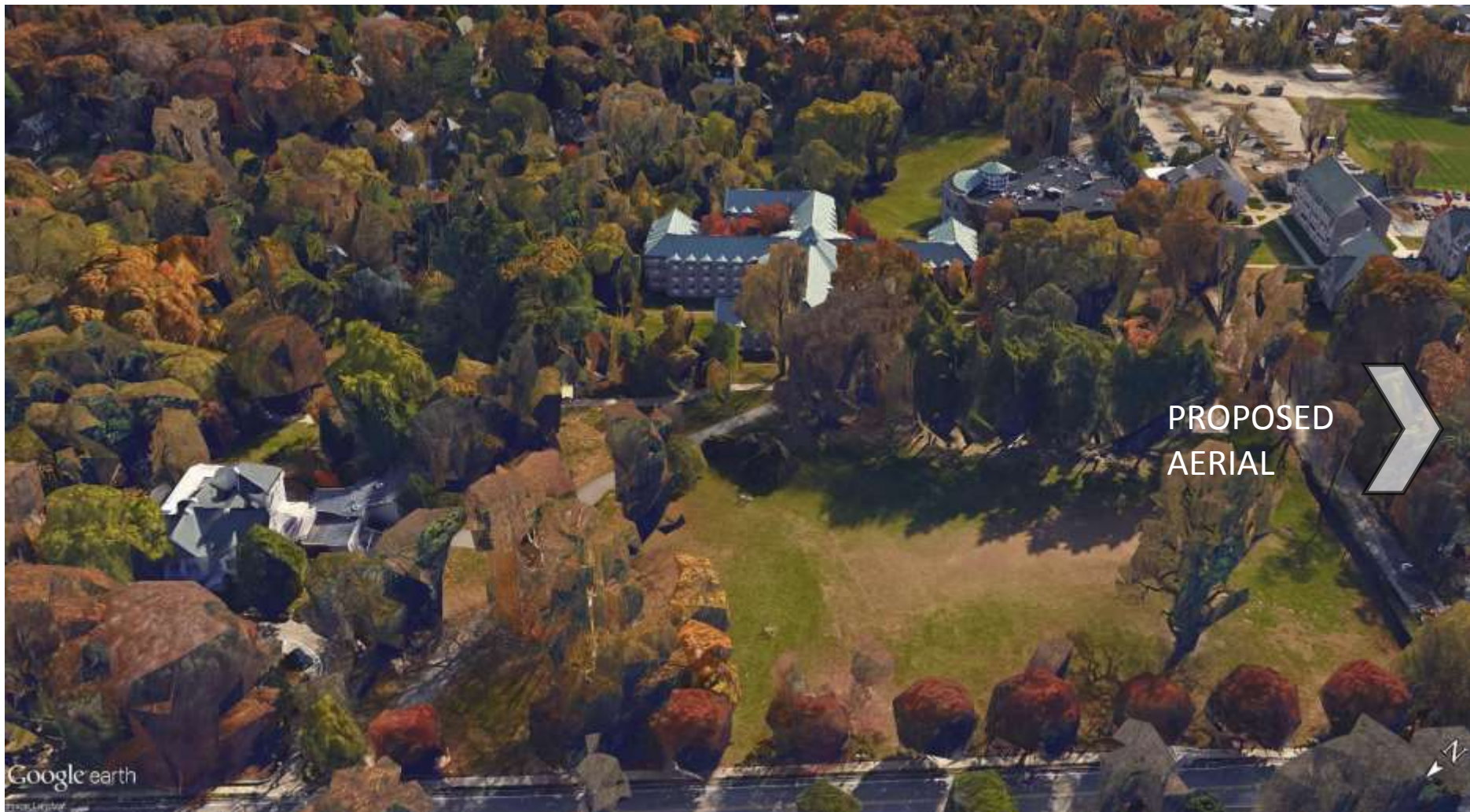
*CLICK MAP BUTTON AT TOP TO RETURN TO MAP



*CLICK MAP BUTTON AT TOP TO RETURN TO MAP



*CLICK MAP BUTTON AT TOP TO RETURN TO MAP



*CLICK MAP BUTTON AT TOP TO RETURN TO MAP



*CLICK MAP BUTTON AT TOP TO RETURN TO MAP

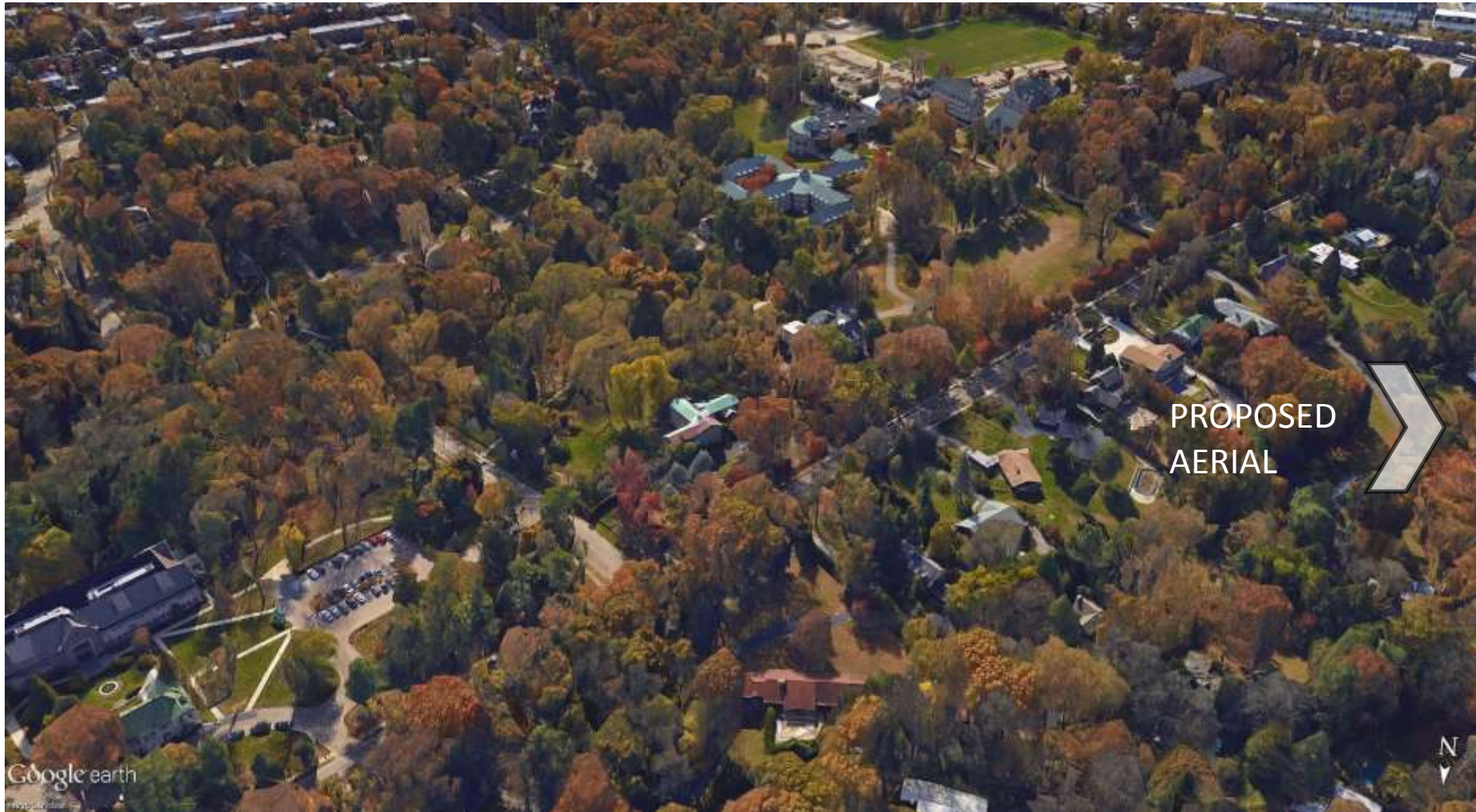


*CLICK MAP BUTTON AT TOP TO RETURN TO MAP



STREETVIEW
PHOTO

*CLICK MAP BUTTON AT TOP TO RETURN TO MAP



*CLICK MAP BUTTON AT TOP TO RETURN TO MAP



*CLICK MAP BUTTON AT TOP TO RETURN TO MAP



*CLICK MAP BUTTON AT TOP TO RETURN TO MAP



*CLICK MAP BUTTON AT TOP TO RETURN TO MAP



*CLICK MAP BUTTON AT TOP TO RETURN TO MAP



*CLICK MAP BUTTON AT TOP TO RETURN TO MAP



PROPOSED
AERIAL

*CLICK MAP BUTTON AT TOP TO RETURN TO MAP



*CLICK MAP BUTTON AT TOP TO RETURN TO MAP



*CLICK MAP BUTTON AT TOP TO RETURN TO MAP



*CLICK MAP BUTTON AT TOP TO RETURN TO MAP



PROPOSED
AERIAL

*CLICK MAP BUTTON AT TOP TO RETURN TO MAP



*CLICK MAP BUTTON AT TOP TO RETURN TO MAP



*CLICK MAP BUTTON AT TOP TO RETURN TO MAP



*CLICK MAP BUTTON AT TOP TO RETURN TO MAP



*CLICK MAP BUTTON AT TOP TO RETURN TO MAP



*CLICK MAP BUTTON AT TOP TO RETURN TO MAP



*CLICK MAP BUTTON AT TOP TO RETURN TO MAP



STREETVIEW
PHOTO

*CLICK MAP BUTTON AT TOP TO RETURN TO MAP



*CLICK MAP BUTTON AT TOP TO RETURN TO MAP



STREETVIEW
PHOTO

A 3D architectural rendering of a street scene. The view is from a low angle, looking down a wide, paved road that curves slightly to the right. In the foreground, a white sedan is driving away from the viewer. A dark blue SUV is in the middle ground, also driving away. To the left, a green SUV is parked or moving slowly. The road has white crosswalk markings. On the left side of the road, there are several tall, thin trees and a traffic light pole with two yellow traffic lights. On the right side, there are larger, leafy trees and a building with a sign that reads "PHILADELPHIA UNIVERSITY". The sky is blue with scattered white clouds. A large white arrow on the left side of the image points towards the text "STREETVIEW PHOTO".

*CLICK MAP BUTTON AT TOP TO RETURN TO MAP