



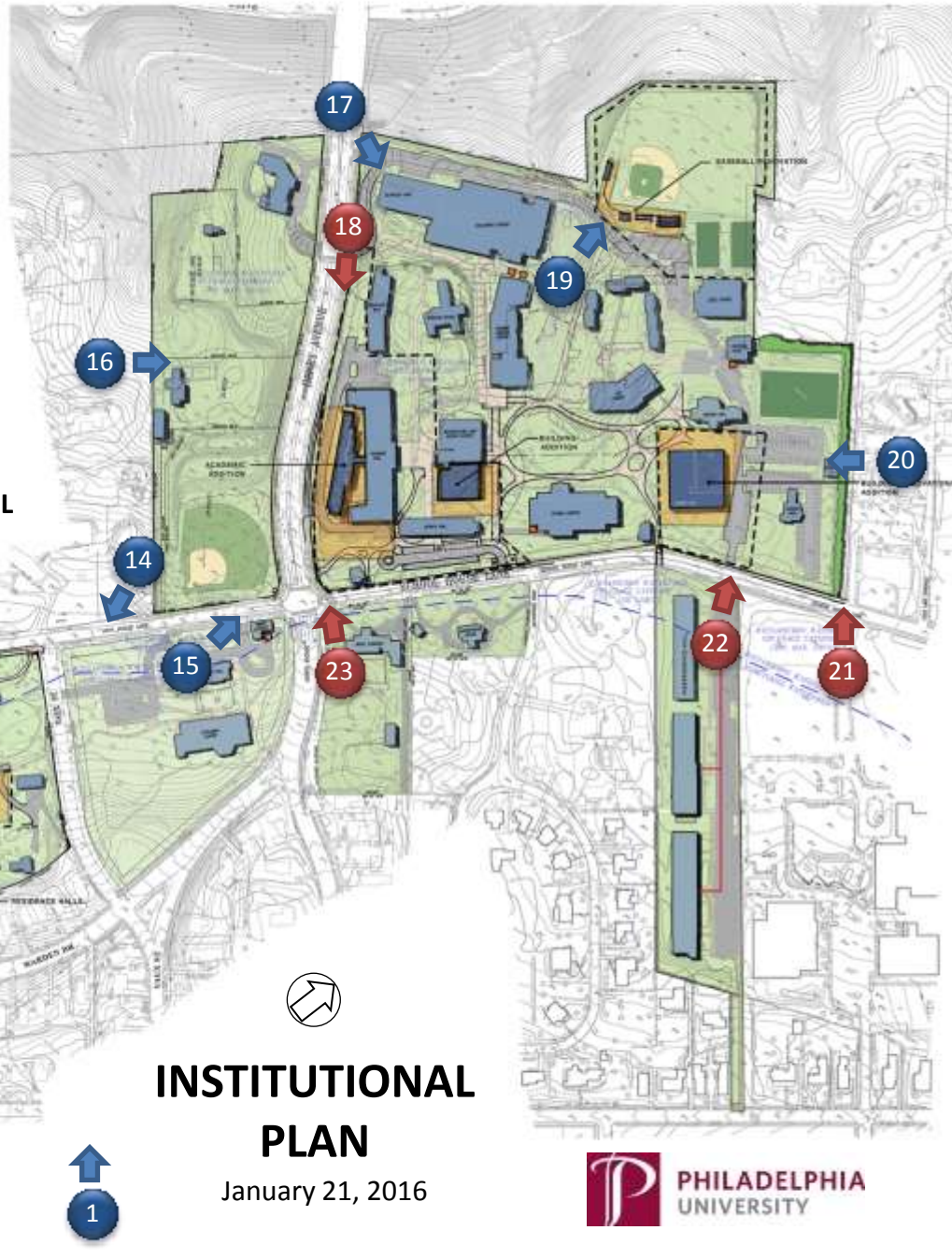


# LEGEND

\*\*CLICK NUMBERED VIEWS FOR LINK TO PERSPECTIVE RENDERINGS

-  EXISTING BUILDINGS
-  APPROXIMATE BUILDING FOOTPRINT COVERAGE
-  PROPOSED SITE IMPROVEMENT ZONES (INCLUDES WALLS, FENCES, AND ATHLETIC FIELDS)
-  PROPOSED BUILDING ZONES
-  TREE BUFFER
-  LOADING ZONE
-  AERIAL VIEWS
-  GROUND LEVEL VIEWS



## INSTITUTIONAL PLAN

January 21, 2016



\*CLICK MAP BUTTON AT TOP TO RETURN TO MAP

A white arrow pointing to the left, with a black outline, positioned to the left of the text.

PREVIOUS

\*CLICK MAP BUTTON AT TOP TO RETURN TO MAP



\*CLICK MAP BUTTON AT TOP TO RETURN TO MAP



\*CLICK MAP BUTTON AT TOP TO RETURN TO MAP



\*CLICK MAP BUTTON AT TOP TO RETURN TO MAP

A large, light gray arrow pointing to the left, with the text "STREETVIEW PHOTO" written in white, sans-serif capital letters to its right.

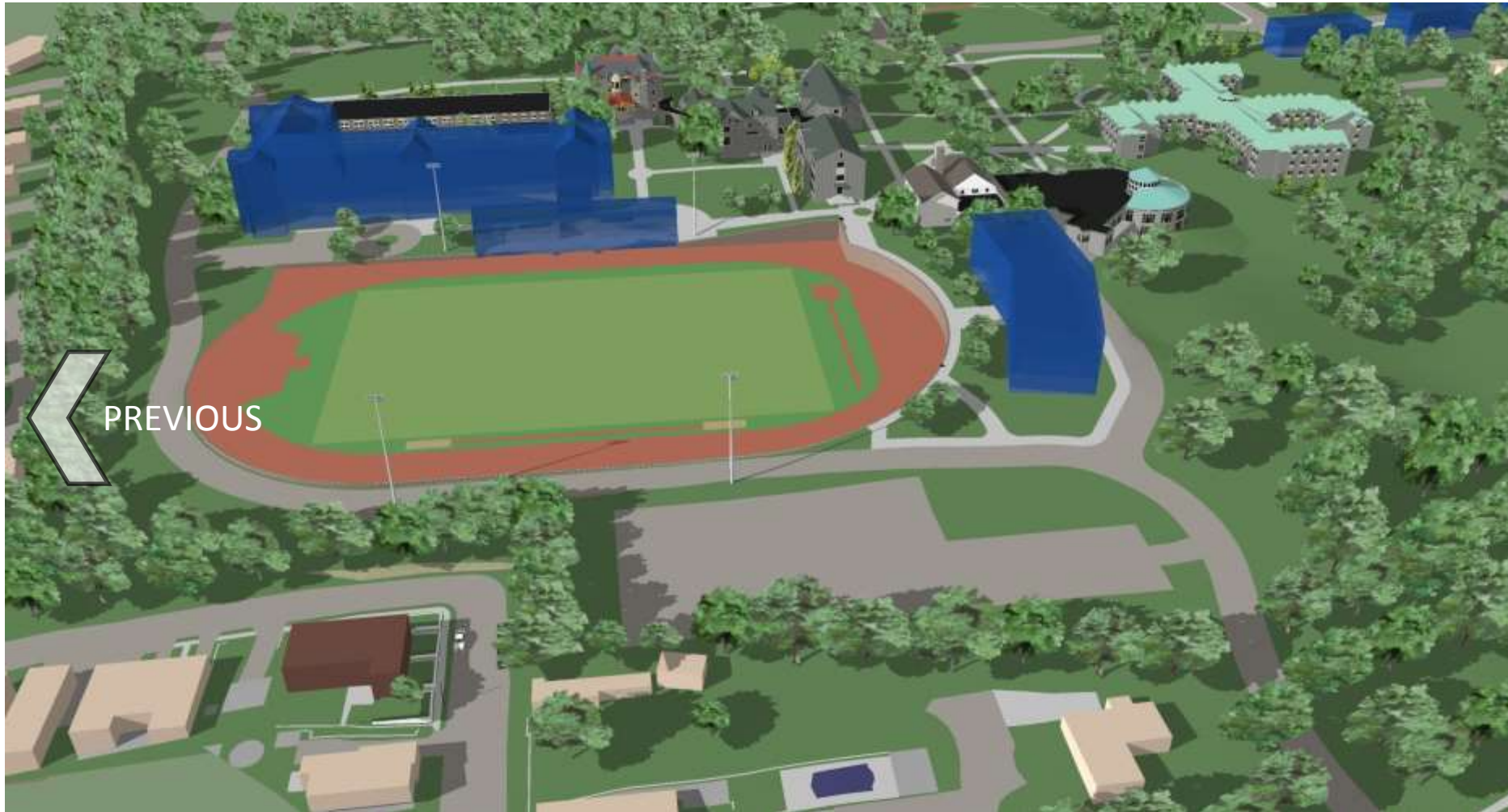
STREETVIEW  
PHOTO

\*CLICK MAP BUTTON AT TOP TO RETURN TO MAP



\*CLICK MAP BUTTON AT TOP TO RETURN TO MAP





\*CLICK MAP BUTTON AT TOP TO RETURN TO MAP



\*CLICK MAP BUTTON AT TOP TO RETURN TO MAP



STREETVIEW  
PHOTO

\*CLICK MAP BUTTON AT TOP TO RETURN TO MAP



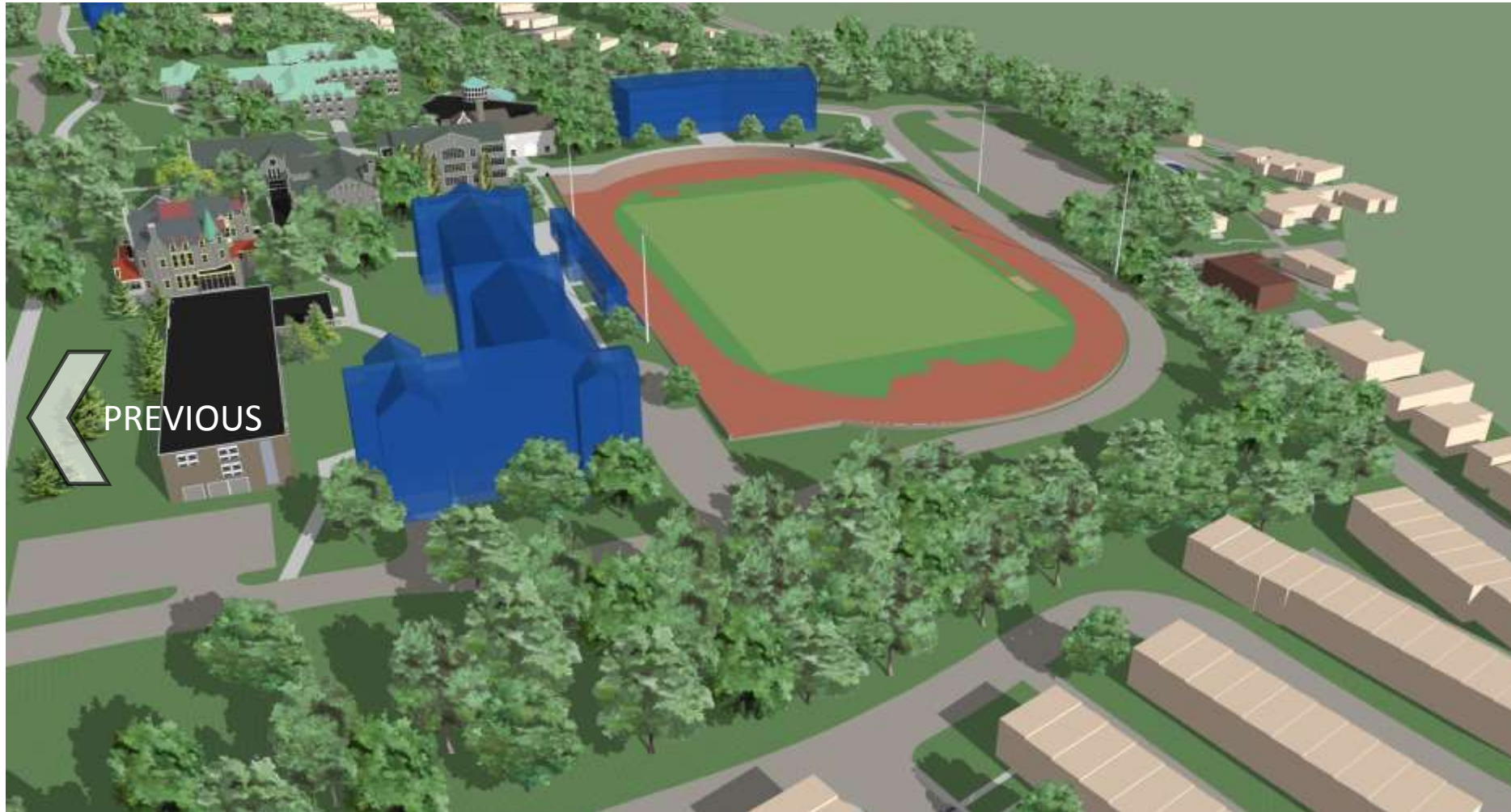
\*CLICK MAP BUTTON AT TOP TO RETURN TO MAP



\*CLICK MAP BUTTON AT TOP TO RETURN TO MAP



\*CLICK MAP BUTTON AT TOP TO RETURN TO MAP



\*CLICK MAP BUTTON AT TOP TO RETURN TO MAP



\*CLICK MAP BUTTON AT TOP TO RETURN TO MAP





STREETVIEW  
PHOTO

\*CLICK MAP BUTTON AT TOP TO RETURN TO MAP



\*CLICK MAP BUTTON AT TOP TO RETURN TO MAP



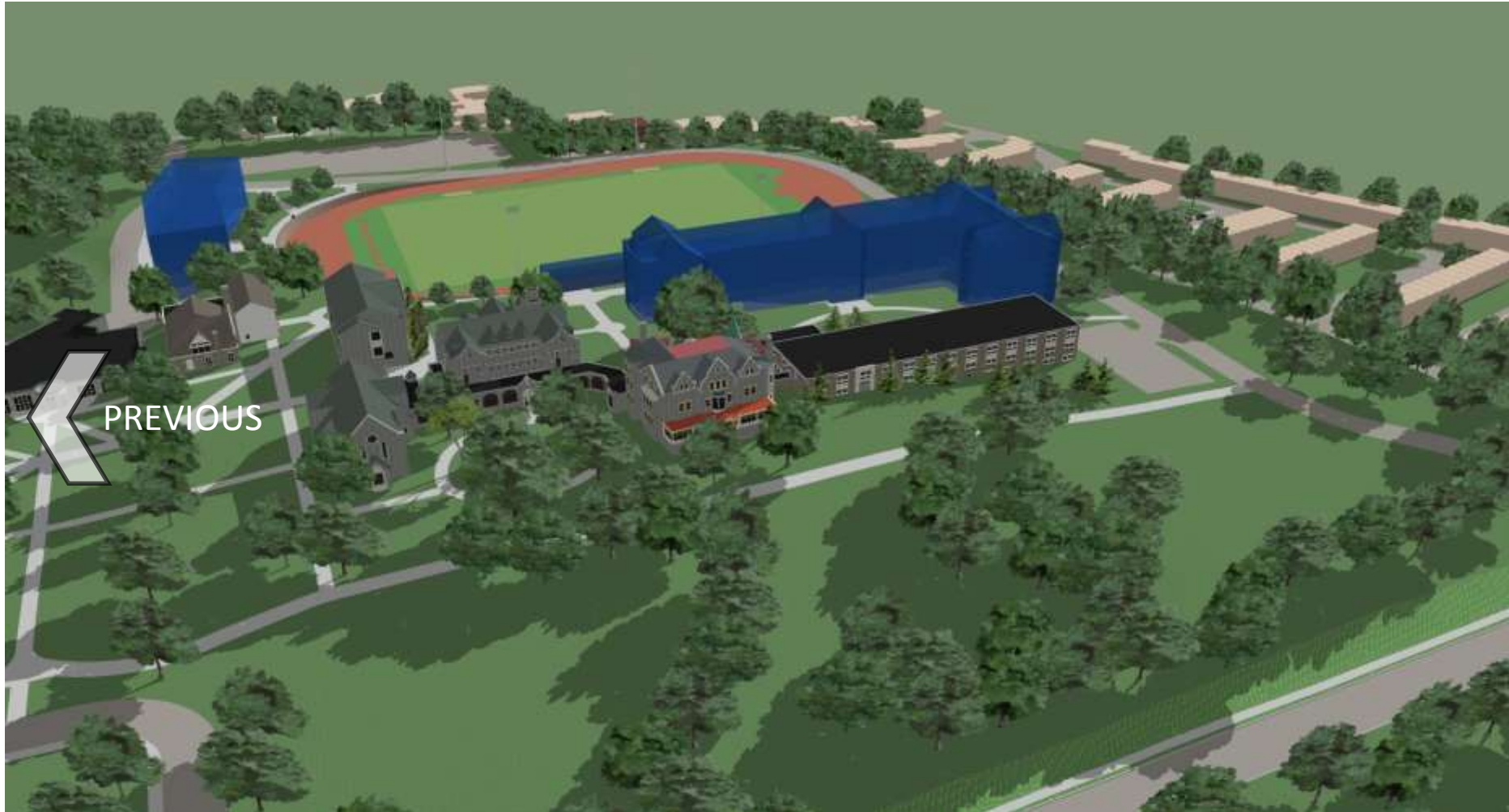
\*CLICK MAP BUTTON AT TOP TO RETURN TO MAP



PROPOSED  
AERIAL



\*CLICK MAP BUTTON AT TOP TO RETURN TO MAP



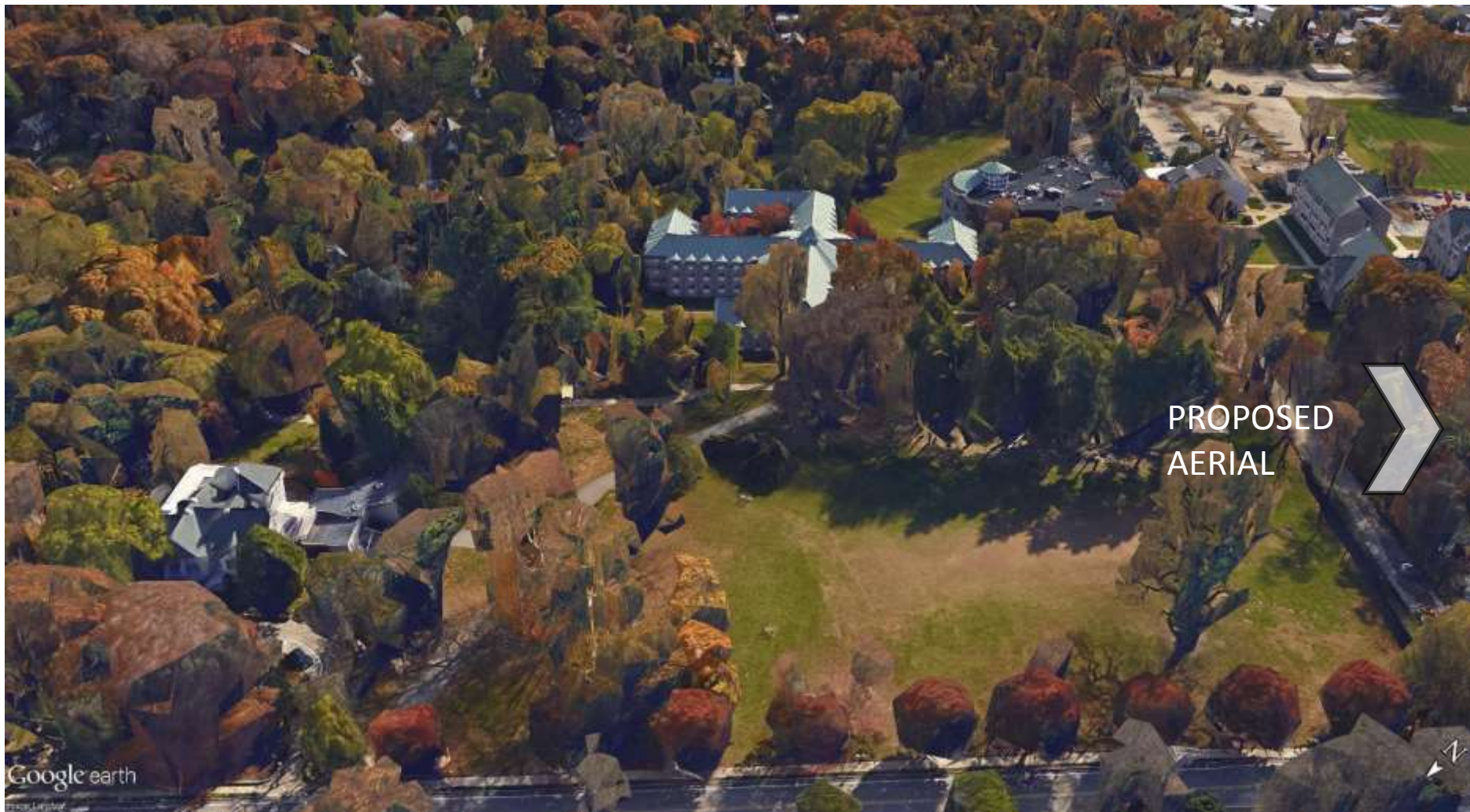
\*CLICK MAP BUTTON AT TOP TO RETURN TO MAP



\*CLICK MAP BUTTON AT TOP TO RETURN TO MAP



\*CLICK MAP BUTTON AT TOP TO RETURN TO MAP



\*CLICK MAP BUTTON AT TOP TO RETURN TO MAP





\*CLICK MAP BUTTON AT TOP TO RETURN TO MAP



\*CLICK MAP BUTTON AT TOP TO RETURN TO MAP



STREETVIEW  
PHOTO

\*CLICK MAP BUTTON AT TOP TO RETURN TO MAP



\*CLICK MAP BUTTON AT TOP TO RETURN TO MAP



\*CLICK MAP BUTTON AT TOP TO RETURN TO MAP



\*CLICK MAP BUTTON AT TOP TO RETURN TO MAP



\*CLICK MAP BUTTON AT TOP TO RETURN TO MAP



\*CLICK MAP BUTTON AT TOP TO RETURN TO MAP





PREVIOUS

\*CLICK MAP BUTTON AT TOP TO RETURN TO MAP



\*CLICK MAP BUTTON AT TOP TO RETURN TO MAP



\*CLICK MAP BUTTON AT TOP TO RETURN TO MAP



\*CLICK MAP BUTTON AT TOP TO RETURN TO MAP



\*CLICK MAP BUTTON AT TOP TO RETURN TO MAP



\*CLICK MAP BUTTON AT TOP TO RETURN TO MAP



\*CLICK MAP BUTTON AT TOP TO RETURN TO MAP



\*CLICK MAP BUTTON AT TOP TO RETURN TO MAP





\*CLICK MAP BUTTON AT TOP TO RETURN TO MAP



\*CLICK MAP BUTTON AT TOP TO RETURN TO MAP



\*CLICK MAP BUTTON AT TOP TO RETURN TO MAP



\*CLICK MAP BUTTON AT TOP TO RETURN TO MAP



\*CLICK MAP BUTTON AT TOP TO RETURN TO MAP



\*CLICK MAP BUTTON AT TOP TO RETURN TO MAP



STREETVIEW  
PHOTO

A 3D architectural rendering of a street scene. The view is from a low angle on a road, looking east. In the foreground, there is a white zebra crossing. A white sedan is driving away from the viewer on the right side of the road. A dark blue SUV is driving away from the viewer in the center. A green SUV is driving away from the viewer on the left side. The road is flanked by lush green trees and a clear blue sky with scattered white clouds. In the distance, a sign for "PHILADELPHIA UNIVERSITY" is visible on the right side. Traffic lights are visible on poles above the road. A large white arrow pointing left is overlaid on the left side of the image, with the text "STREETVIEW PHOTO" next to it.

\*CLICK MAP BUTTON AT TOP TO RETURN TO MAP