



READY FOR THE FUTURE



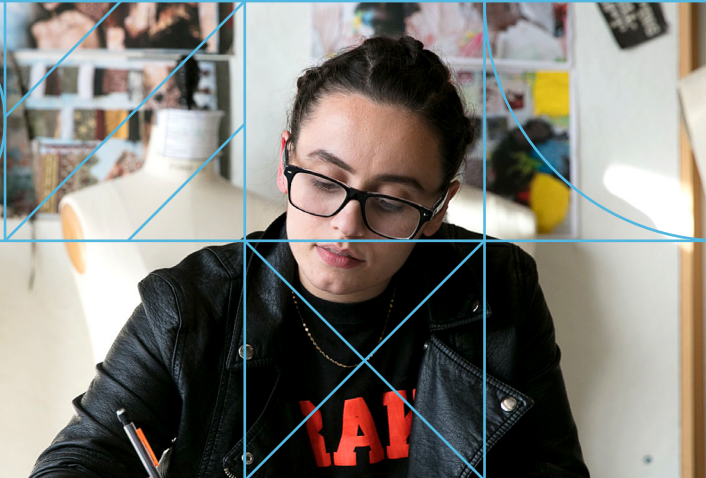
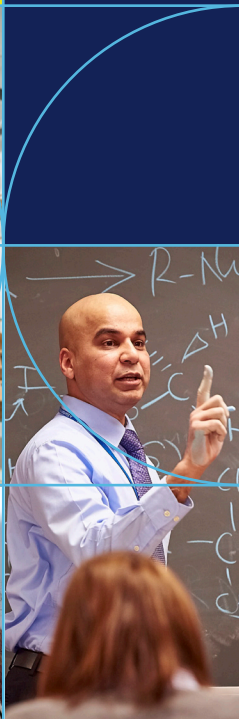
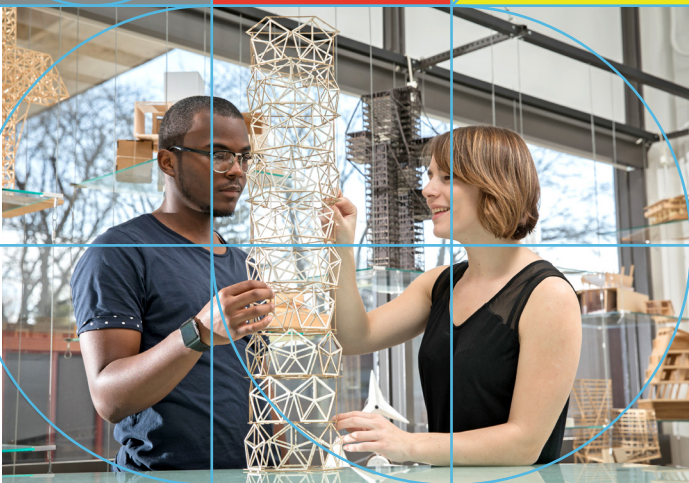
Jefferson
Thomas Jefferson University
HOME OF SIDNEY KIMMEL MEDICAL COLLEGE

ONE VISION, Endless Possibilities

Thomas Jefferson University has a rich legacy. In fact, through unifying two widely acclaimed and highly honored legacies of innovation, education, research and professional excellence, we've surpassed 325 years of combined history.

Thomas Jefferson University was founded in 1824 as Jefferson Medical College, and Philadelphia University was founded in 1884 as the Philadelphia Textile School. Both were ahead of their time and focused on the importance of experiential learning. The new Jefferson — formed through the merger of Philadelphia University and Thomas Jefferson University — was established on July 1, 2017.





Areas of Interest

Our core programs — or areas of interest — drive students beyond the traditional limits of academics to inspire change and test just how far you can take what you know.

Learn more at [Jefferson.edu/Academics](https://jefferson.edu/academics).

Architecture

Reimagine a city's infrastructure side-by-side with industry professionals. Develop the next software program for sustainable engineering. Shape a building that facilitates wellness. And build tomorrow's breakthroughs.

Business

Help small businesses build successful 10-year plans. Manage the finances of a Fortune 500 company. Learn how analytics factor into your own business dreams. And close the deals that will open a future of possibility.

Design

Build the workspace that will inspire a new workforce, or a hospital with all the comforts of home. Work on real projects — and make real connections — at global design companies. And craft a world that's ready for anything.

Engineering

Find new solutions to make green homes greener. Design a water-delivery system that saves lives. Reduce production costs for critical consumer goods. And develop solutions to global problems before they start.

Fashion & Textiles

Make sustainable in season, every season. Weave new technology into textiles. Develop fashion collections that speak louder than words. And ensure that the "next new thing" is unlike anything that's come before.

Health

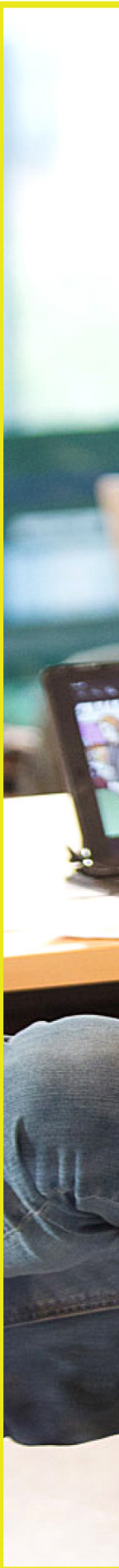
Develop better healthcare solutions for at-risk communities. Push the patient-centric approach to medicine forward. Advocate for those who need health allies most. And protect our future, for generations to come.

Science

Decrease the spread of global disease. Develop the science that will reshape the world. Manage the laboratories that will lead the charge in preventive care. And reimagine what humankind can accomplish.

Social Science

Develop the next content delivery system by studying the evolution of new media. Spot sociological trends that will guide business decades from now. And ensure that our data-driven future never loses the human touch.







Colleges, Schools and Institutes

Thomas Jefferson University is a professional university with 160 graduate and undergraduate programs offered in 10 colleges and 3 schools in areas such as architecture, business, design, engineering, fashion and textiles, health, science and social science.

At Jefferson, you will collaborate with your peers across disciplines and redraw the limits through every standard that exists. You will redefine humanly possible, giving you the competitive advantage employers are seeking.

College of Architecture and the Built Environment

The College of Architecture and the Built Environment is educating the next generation of design and construction professionals in architecture, interior design, landscape architecture, historic preservation, construction management, geodesign, sustainable design and real estate development. The College partners with major corporations, local communities and nonprofit organizations, supplying a broad range of real-world projects and networking opportunities. This dynamic approach to education and emphasis upon social equity, sustainability and design excellence equips graduates with a competitive advantage, poised to become innovative leaders in an equitable and sustainable future.

Learn more at [Jefferson.edu/CABE](https://jefferson.edu/CABE).

College of Health Professions

The Jefferson College of Health Professions (JCHP) is committed to educating professionals of the highest quality ready for contemporary practice in the global community. The College, representing diverse programs across the health professions, offers opportunities for students to develop skills and behaviors within a dynamic community of learners. As part of a world-class academic health science center, the college prepares students to become outstanding practitioners, researchers and leaders in health care.

Get started at [Jefferson.edu/JCHP](https://jefferson.edu/JCHP).

College of Humanities & Sciences

Human interactions and environments are the focus of the Jefferson College of Humanities & Sciences, where we take an interdisciplinary approach to learning at the intersections of the liberal arts with the social and behavioral. Our students are prepared to succeed in the professional realm or to continue their academic studies at a higher level. No matter which path they choose our graduates are valued for their integrative thinking, collaborative work ethic and global perspective.

Visit us at [Jefferson.edu/JCHS](https://jefferson.edu/JCHS).

College of Life Sciences

The Jefferson College of Life Sciences provides undergraduate, graduate and postdoctoral education and research training in the life sciences to prepare our students to make significant contributions in life science through careers in academia, industry and government. Graduates have gone on to continue with additional graduate and professional education and training programs or directly on to successful careers at colleges and universities, pharmaceutical and biotechnology companies, healthcare settings, government agencies and many other professional venues.

Get started at [Jefferson.edu/JCLS](https://jefferson.edu/JCLS).

College of Nursing

Jefferson College of Nursing offers unparalleled advantages to students with the desire and aptitude to become successful nurses. We provide an exceptional continuum of fully accredited nursing degree programs, from baccalaureate through doctoral levels. The College is an integral part of Thomas Jefferson University Hospital, one of the top-ranked hospitals in the nation, as well as Jefferson Health System hospitals throughout southeastern Pennsylvania and southern New Jersey. Seven of our hospitals are recognized by the American Nurses Credentialing Center as Magnet® hospitals for quality patient care, nursing excellence and innovations in professional nursing practice.

Learn more at [Jefferson.edu/JCN](https://www.jefferson.edu/JCN).

College of Pharmacy

Jefferson College of Pharmacy offers the innovative Doctor of Pharmacy program that integrates a variety of learning techniques to facilitate development of critical thinking, clinical, and leadership skills and emphasizes interprofessional skills, cultural competency and societal responsibility, preparing each graduate for challenging roles across a diverse spectrum of pharmacy practice settings and related healthcare careers. The College also offers an MS degree and certificate programs in Population Health Pharmacy in a collaborative effort with the Jefferson College of Population Health. This program prepares pharmacists to develop and implement population health initiatives across all types of pharmacy settings.

Learn more at [Jefferson.edu/Pharmacy](https://www.jefferson.edu/Pharmacy).

College of Population Health

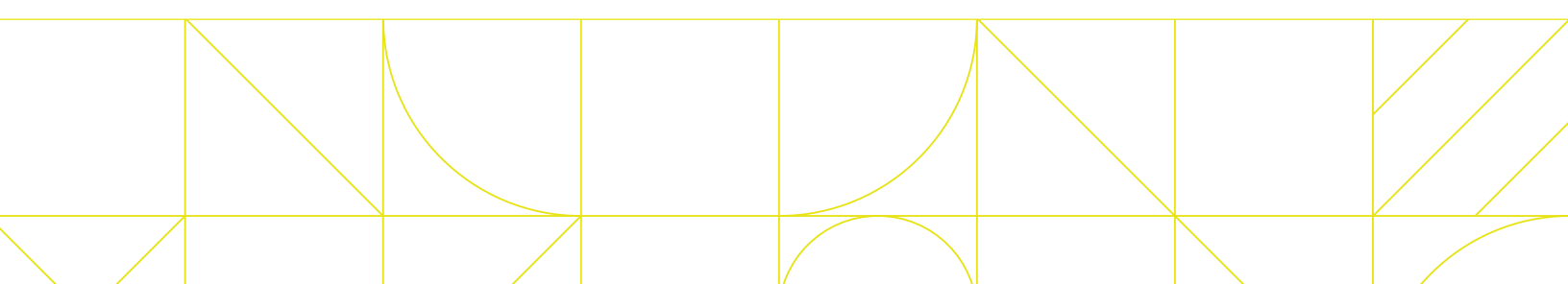
Jefferson College of Population Health — the first College of its kind in the country — explores the policies defining the health and well-being of populations. The College prepares leaders with global vision to examine the social determinants of health care by providing exemplary graduate academic programming in population health, public health, health policy, healthcare quality and safety and health outcomes research. Our educational offerings are enhanced by research, publications, continuing education and professional development offerings.

Learn more about us at [Jefferson.edu/PopHealth](https://www.jefferson.edu/PopHealth).

College of Rehabilitation Sciences

Jefferson College of Rehabilitation Sciences offers degrees in Occupational Therapy, Physical Therapy, Athletic Training and Speech Language Pathology. Students enjoy opportunities to participate in research, clinical and educational experiences. The College is committed to becoming a recognized leader in innovative educational, clinical and research programs.

Visit us at [Jefferson.edu/JCRS](https://www.jefferson.edu/JCRS).



Kanbar College of Design, Engineering & Commerce

Kanbar College offers an innovative and transdisciplinary approach to teaching and learning that provides students with the skills and knowledge to think creatively, brainstorm out-of-the-box ideas and work collaboratively to discover innovative solutions to complex problems. Through an integrated core curriculum, students gain the added value of expertise in related fields, as well as deep discipline-specific knowledge. The program retains the core learning of each major while forging new collaborations between designers, engineers and business practices.

Learn more at [Jefferson.edu/KanbarCollege](https://jefferson.edu/KanbarCollege).

— School of Business

The School of Business prepares students for the future of business with the disciplinary depth and interdisciplinary breadth to innovatively confront the challenges that exist in the 21st-century and beyond. The school reflects the University's focus on innovation, professional training and the liberal arts through active learning and real-world problem solving, and emphasizing collaboration across disciplines and with external partners for professional readiness and networking exposure.

Learn more at [Jefferson.edu/Business](https://jefferson.edu/Business).

— School of Design and Engineering

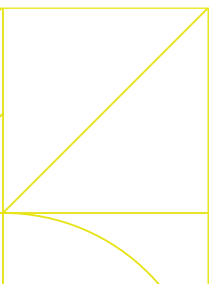
The school emphasizes in-depth exploration of individual design and engineering disciplines, while encouraging interdisciplinary communication and collaboration. Classes stress conceptual thinking, design excellence, intellectual curiosity and creative expression, combining a focused concentration on one particular field with a broad-based educational foundation that fosters critical thinking skills in a global context. This multi-tiered approach provides graduates with the knowledge and skills to navigate professional challenges successfully and to reap the rewards of leadership and success in their careers.

Learn more about us at [Jefferson.edu/DesignandEngineering](https://jefferson.edu/DesignandEngineering).

— Jefferson Institute for Bioprocessing (JIB)

The Jefferson Institute for Bioprocessing (JIB) is the first – and only – specialized education and training institute for biopharmaceutical processing in North America that combines commercial single-use processing equipment with the internationally recognized National Institute for Bioprocessing Research and Training (NIBRT) curriculum. The focus of JIB is hands-on training of industry professionals through workshops and certificates and hands-on education of new bioprocessing engineers at the undergraduate and graduate levels.

Get started at [Jefferson.edu/JIB](https://jefferson.edu/JIB).



School of Continuing and Professional Studies

The School of Continuing and Professional Studies provides a path for business and healthcare professionals, medical assistants, paramedics, firefighters, occupational therapy assistants and other professionals to complete their bachelor's degree. With four convenient locations, accelerated courses, flexible class times and online class options, students can earn or complete a degree on a schedule that matches their lifestyle. Students can transfer up to 72 credits toward specialized and practical certificate programs in medical coding and healthcare management, or complete prerequisite courses.

Learn more at [Jefferson.edu/SCPS](https://www.jefferson.edu/SCPS).

Sidney Kimmel Medical College

Founded in 1824, Jefferson Medical College, now the Sidney Kimmel Medical College (SKMC), has awarded more than 31,000 medical degrees and has more living graduates than any other private medical school in the nation. Recognized for its balanced approach to medical education, it offers both undergraduate medical education programs and innovative joint degree programs to more than 1,000 students each year.

Learn more at [Jefferson.edu/SKMC](https://www.jefferson.edu/SKMC).

Institute of Emerging Health Professions

Our mission at the Institute of the Emerging Health Professions (IEHP) is to provide innovative and unique education and training that will be needed to fill future career, training and certification gaps in healthcare practice and delivery. The Institute of Emerging Health Professions is a first-of-its-kind educational think-tank and incubator aimed at providing today the training that workers in health care and related disciplines will need tomorrow.

Learn more at [Jefferson.edu/IEHP](https://www.jefferson.edu/IEHP).





Discover Research at Jefferson



At Jefferson, we are redefining humanly possible by reimagining health, education and discovery to create a fast track to innovation. We design novel fabrics, develop new products and transform business practices. We investigate biological pathways, develop new therapies and change healthcare delivery.

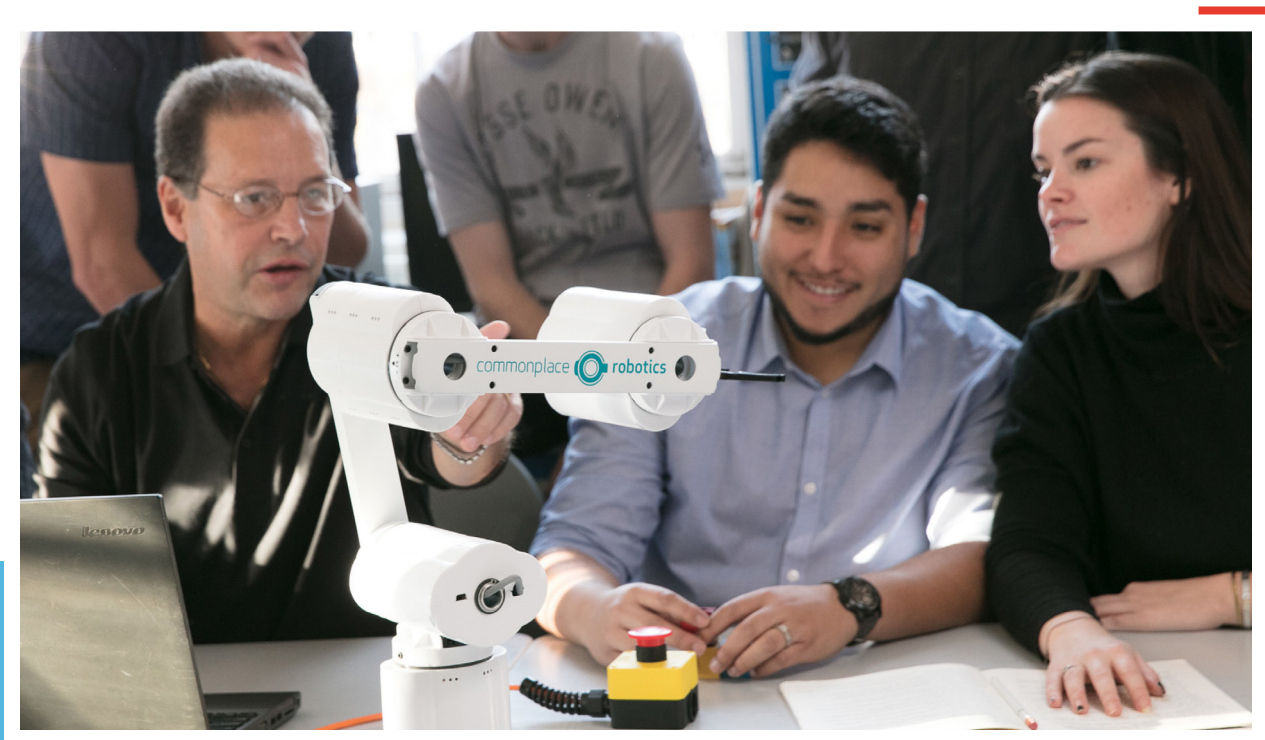
Jefferson's research mission is to advance and apply knowledge to improve lives. We are committed to a full spectrum of research — basic, translational, clinical and applied — and we encourage collaboration across disciplines. Our programmatic, or team-based, focus brings together investigators with distinct but complementary expertise to make advances in understanding complex issues such as RNA biology and the creation of smart cities.

We are dedicated to supporting fundamental research on the most basic questions of science, engineering and society — studies driven by researchers' passions to explore very specific questions and follow the answers wherever they lead, on topics like mitochondrial function and the epigenetics of lung disease.

Our researchers actively apply new knowledge to address real-world problems. This happens in clinical research, such as reducing surgical infections and treating liver disease, as well as applied research and development projects in fields such as functional fabrics, medical and industrial use of hemp, and the design of lighting for population health.

In all we do, including our research, we aim to improve lives by impacting the way we think, live and care for each other.

Learn more at Jefferson.edu/Research.



The Jefferson Advantage

By working on transdisciplinary teams, you'll gain a broader understanding of differing perspectives and develop critical decision-making skills so you are able to solve complex problems. Our promise is to prepare you for tomorrow's yet-to-be determined professions (maybe even one you'll invent for yourself!) At Jefferson, we deliver unparalleled value to your academic experience.

Jefferson Center for Interprofessional Practice and Education

JCIPE is dedicated to promoting excellence in health professions education and healthcare delivery through innovations in interprofessional education, collaborative practice, faculty and staff development and scholarship. Programming is developed, delivered and evaluated as part of preclinical/didactic education, clinical simulation and clinical education within highly effective team-care settings working with our outpatient practices, Thomas Jefferson University Hospital, affiliates and community partners. The Center serves as a coordinating body to facilitate the expansion of interprofessional education, faculty development and collaborative practice across Thomas Jefferson University.

Learn more at [Jefferson.edu/JCIPE](https://jefferson.edu/JCIPE).

Nexus Learning

We're linking the arts and sciences, redrawing limits and slicing through every standard and norm that exists. That's how the greatest human advancements are made. We call it Nexus Learning™.

We connect disciplines, establish creative, collaborative, real-world learning environments for our students, and infuse all that we do with the liberal arts. Nexus Learning™ places Jefferson not just ahead of the curve but way out in front of traditional higher education curricula. With this unique approach to learning, our students and faculty are standing out in their disciplines — winning industry awards on regional, national and even global scales.

Visit us at [Jefferson.edu/NexusLearning](https://jefferson.edu/NexusLearning).



Ready to Apply?

Jefferson's academic programs are designed to meet and exceed the needs of the modern professional world. As a Jefferson student, you will gain the experience, knowledge, and partnerships from day one that will set you apart and prepare you for success and impact at every step along the way. The most exciting part—as a Jefferson graduate you will have the skills and expertise professionals employers are clamoring to hire.

Learn more about admissions requirements and deadlines for your program of interest at [Jefferson.edu/Apply](https://jefferson.edu/Apply).

International Admissions

At Jefferson, you will broaden your knowledge in an academic environment that celebrates differences and encourages growth. We set a high priority on the exchange of ideas, research, education and care with members of the international community.

For more information, visit [Jefferson.edu/International](https://jefferson.edu/International).

Get a 360° View

Our campuses are incubators, tradition breakers and beautiful places to learn. We cross the city and the suburbs. From our vibrant Center City campus to our East Falls grounds and beyond, each location offers a unique learning environment to experience all that is Jefferson.

We offer campus tours, program information sessions, individual appointments, and online events throughout the year.

Take the next step. Schedule a visit at [Jefferson.edu/Visit](https://jefferson.edu/Visit).

Thomas Jefferson University
Office of Admissions
215-503-8890
TJU.Admissions@jefferson.edu
[Jefferson.edu/Admissions](https://jefferson.edu/Admissions)



Jefferson
Thomas Jefferson University
HOME OF SIDNEY KIMMEL MEDICAL COLLEGE